

# LIST OF PATCH DIAGRAMS

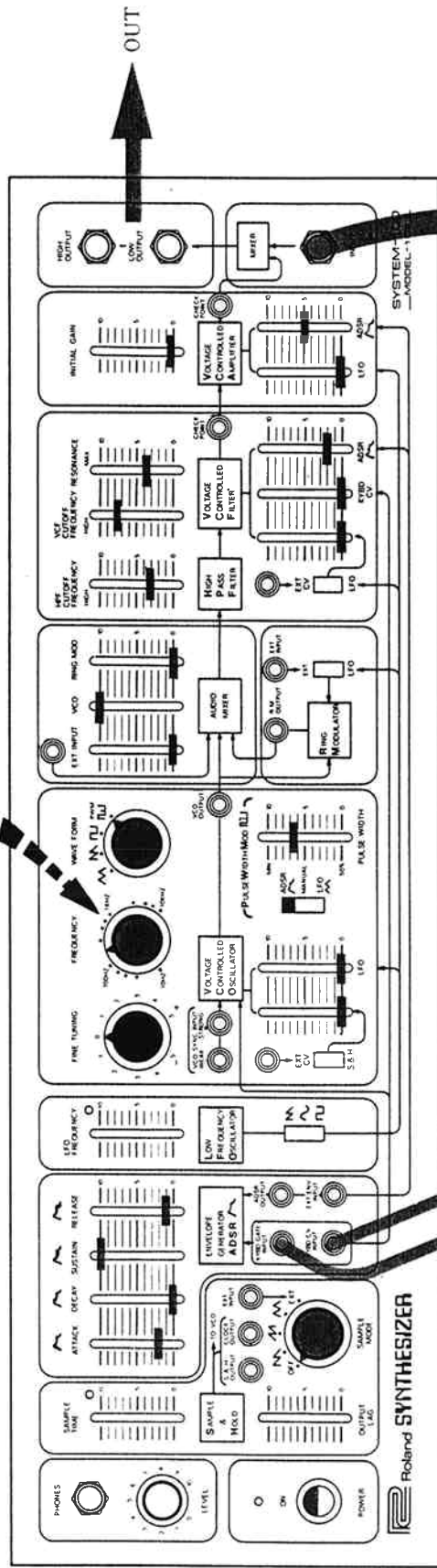
ADSR Test .....	25	S/H Test .....	26	Flute + Violin .....	9
AM Test .....	24	Snare Drum .....	14	Vowel Sounds	
Accordion .....	1	Standing Ovation .....	15	see : Basic Vowel Patch .....	3
Applause .....	2	Steam Locomotive .....	16	Wind .....	22
Basic Vowel Patch .....	3	String Orchestra .....	17	"You" .....	23
Birds .....	4	Sync Test, Strong .....	27	Video Patch .....	30
Bubbles .....	5	Sync Test, Weak .....	28		
Celesta .....	6	Sync Tone Color Experiments .....	29		
Clarinet .....	7	Test Patches .....	24-29		
Delayed Vibrato .....	8	Thunder .....	18		
Flute + Violin .....	9	Timpani .....	19		
French Horn .....	11	Tone Color Experiments, Sync .....	29		
Cong .....	10	Tornado .....	20		
Horn .....	11	VCO Strong Sync Test .....	27		
Locomotive, Steam .....	16	VCO Weak Sync Test .....	28		
Oboe .....	12	Vibraphone .....	21		
Ring Modulator .....	13	Vibrato, Delayed .....	8		

## TEST PATCHES

AM Test .....	24
ADSR Test .....	25
S/H Test .....	26
Sync Test, Strong .....	27
Sync Test, Weak .....	28
Sync Tone Color Experiments .....	29

Tune to one octave below VCO-1

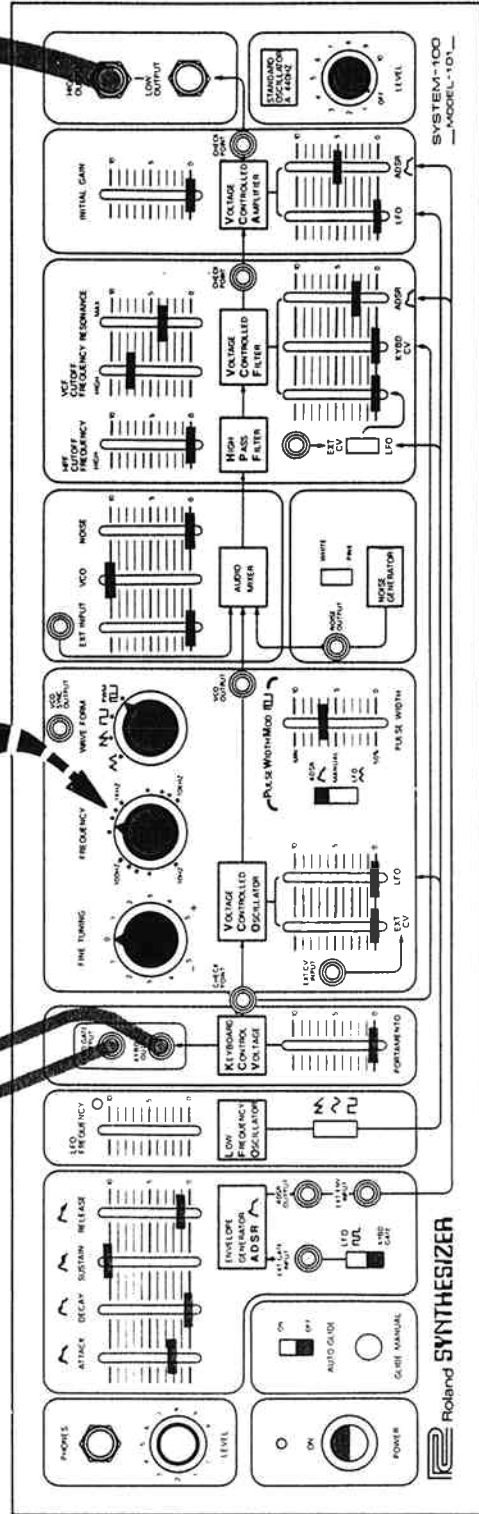
(VCO-1 の1オクターブ下: 220Hzにセット)



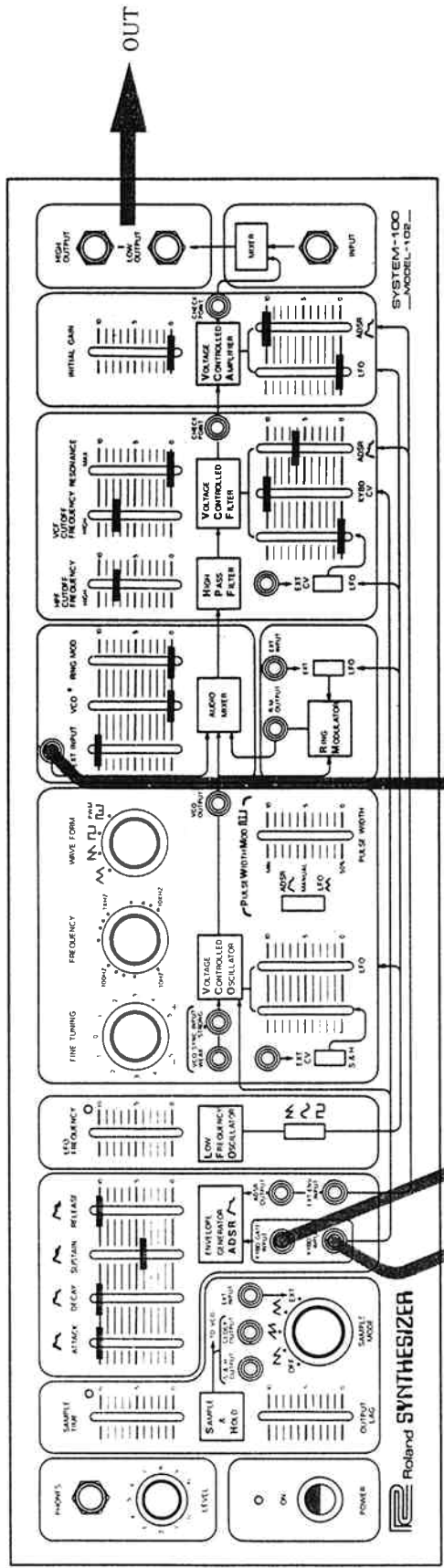
**102**



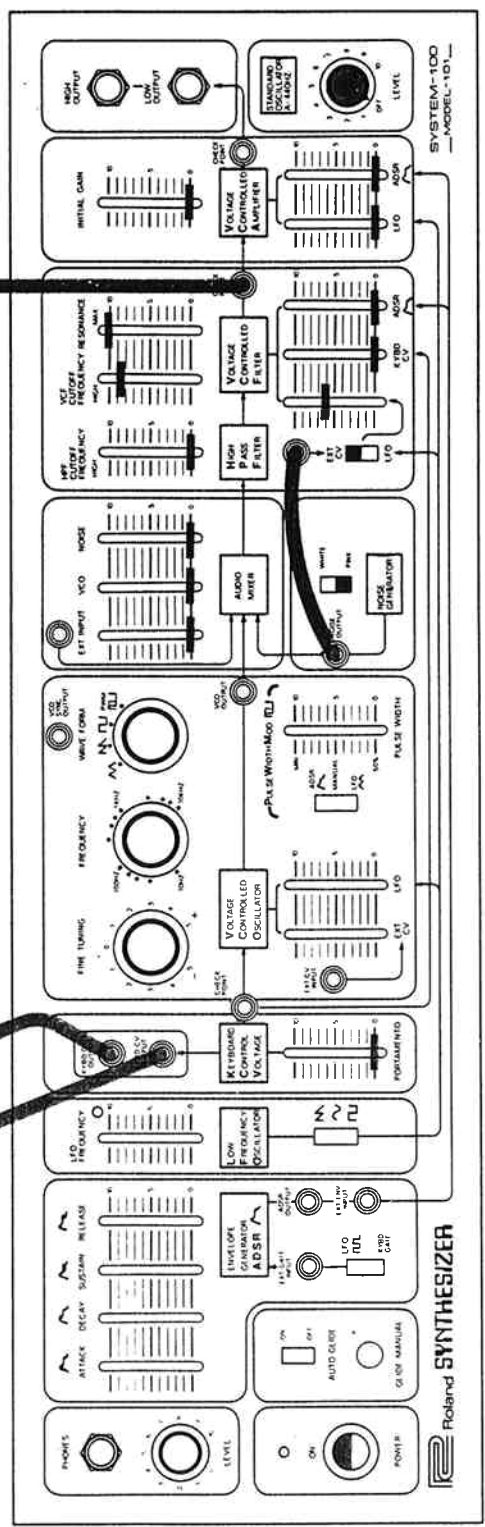
Set at 440Hz.  
(440Hzにセット)



**101**

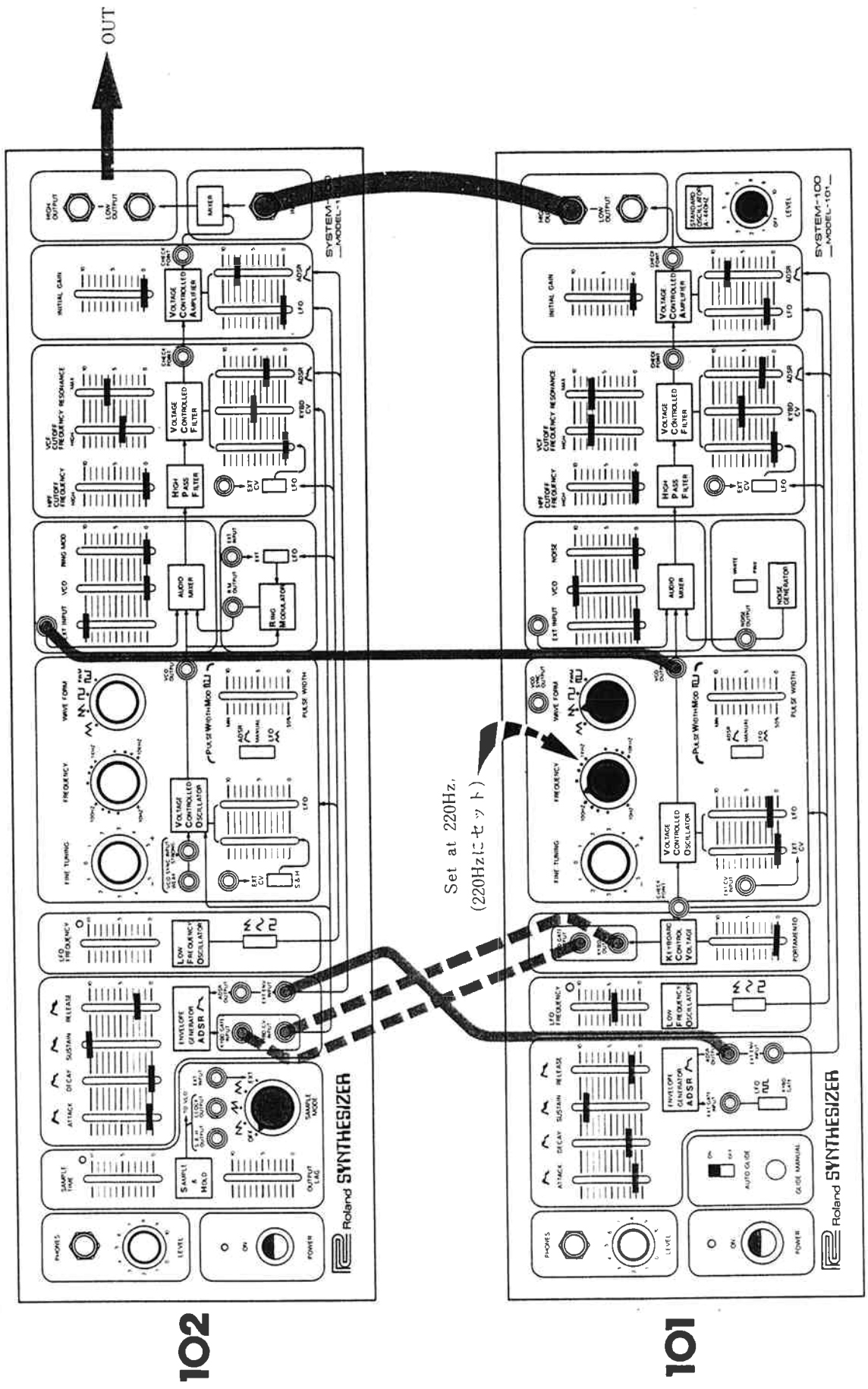


102



101

Press a key on the keyboard to produce applause.  
 (キーを押すと拍手音が出ます。)

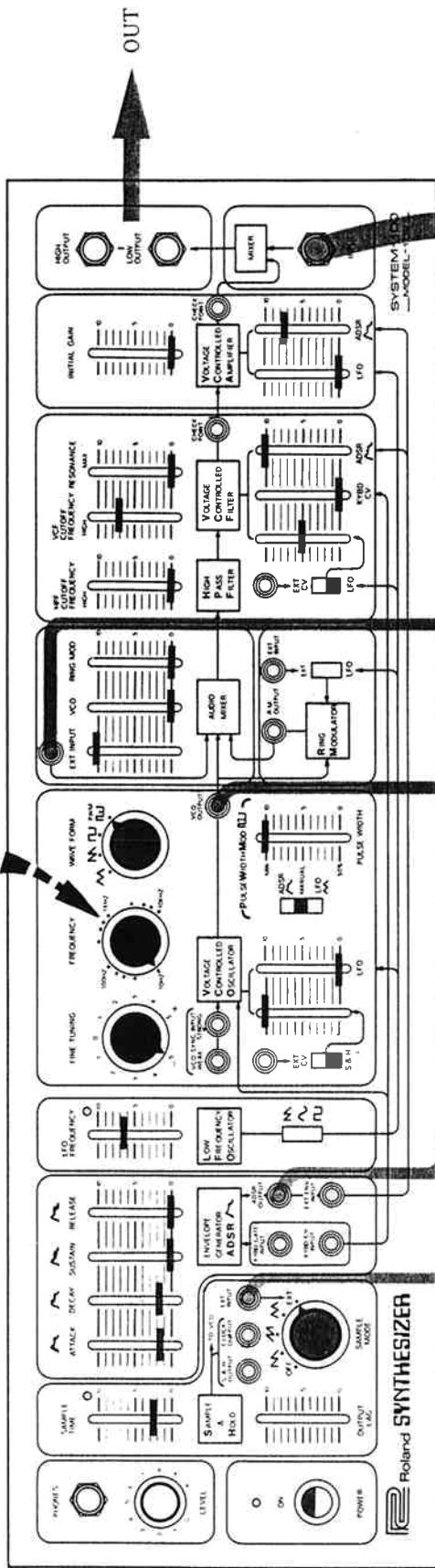


102

101

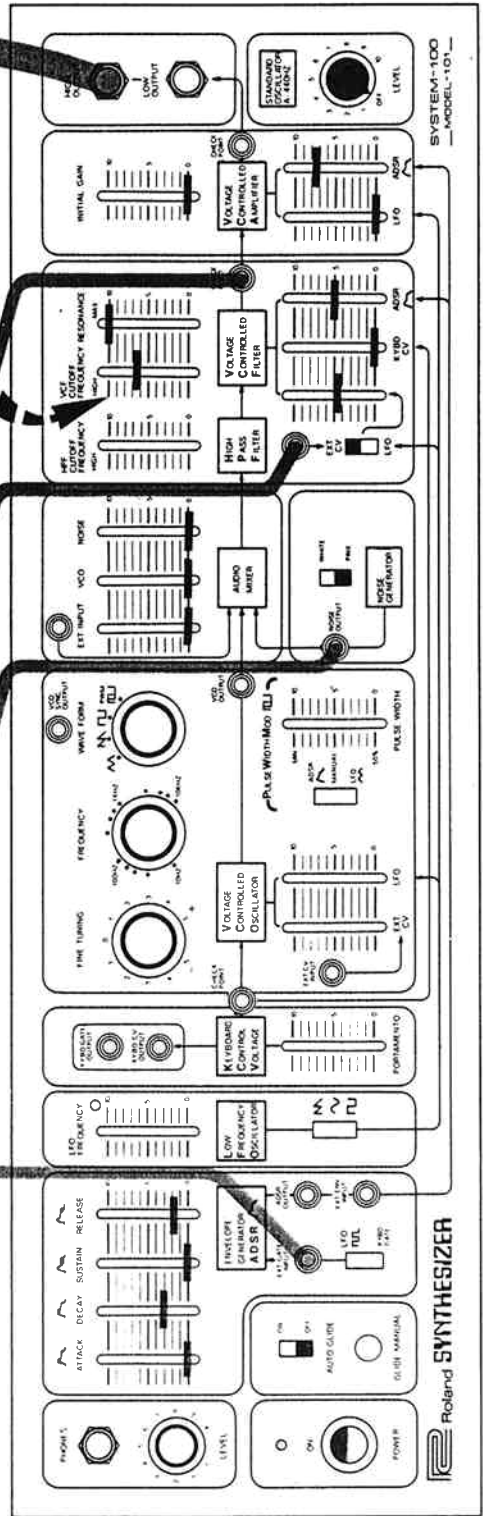
This patch will require a lot of experimenting, especially with the VCF settings.  
(フィルター部のセッティングによって、さまざまなバリエーションをつくり出すことができます。)

Set near lowest point  
(10Hz ぐらいの低い周波数にセット)



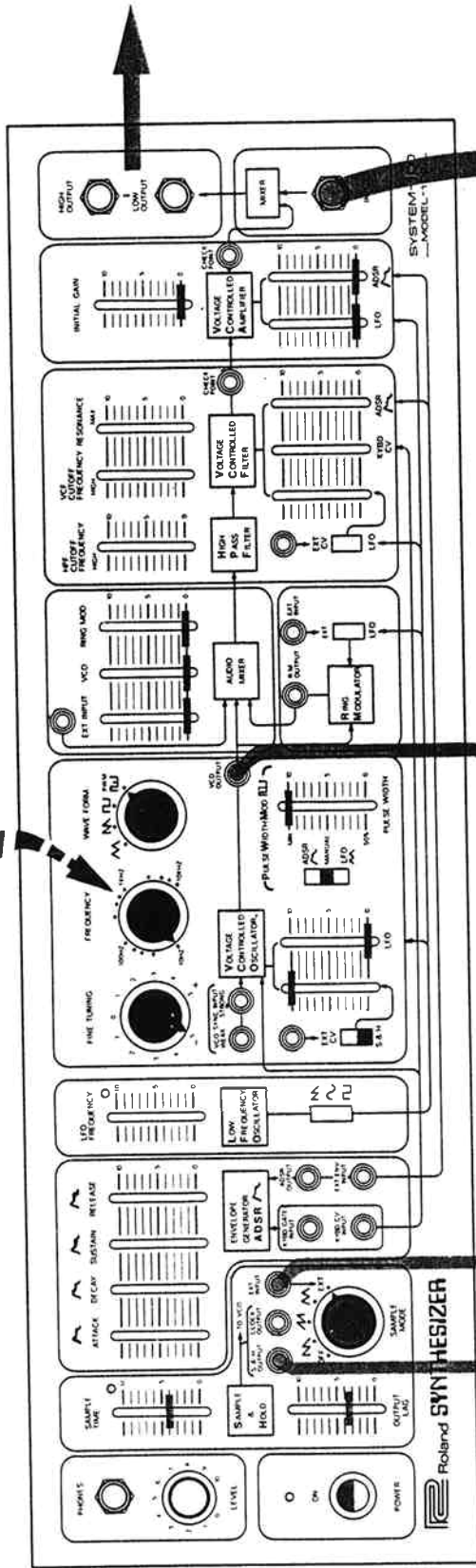
102

Decides average pitch  
(適切な高さにセットします。)

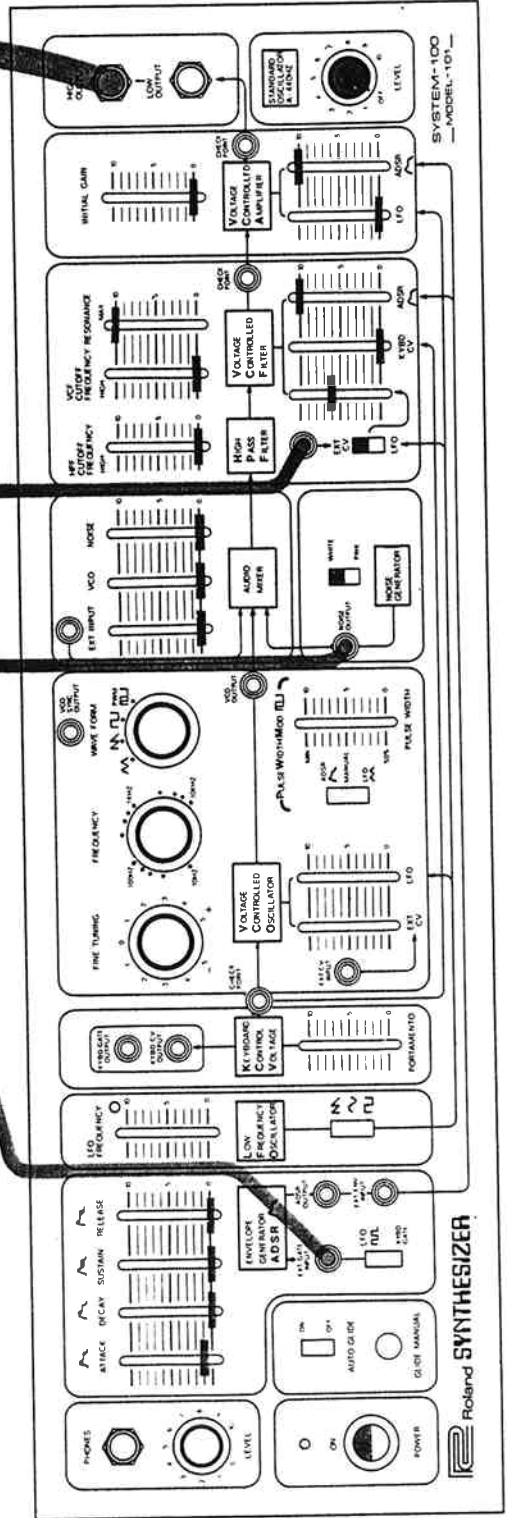


101

Set near lowest point  
 (10Hzぐらいの低い周波数にセット)



102

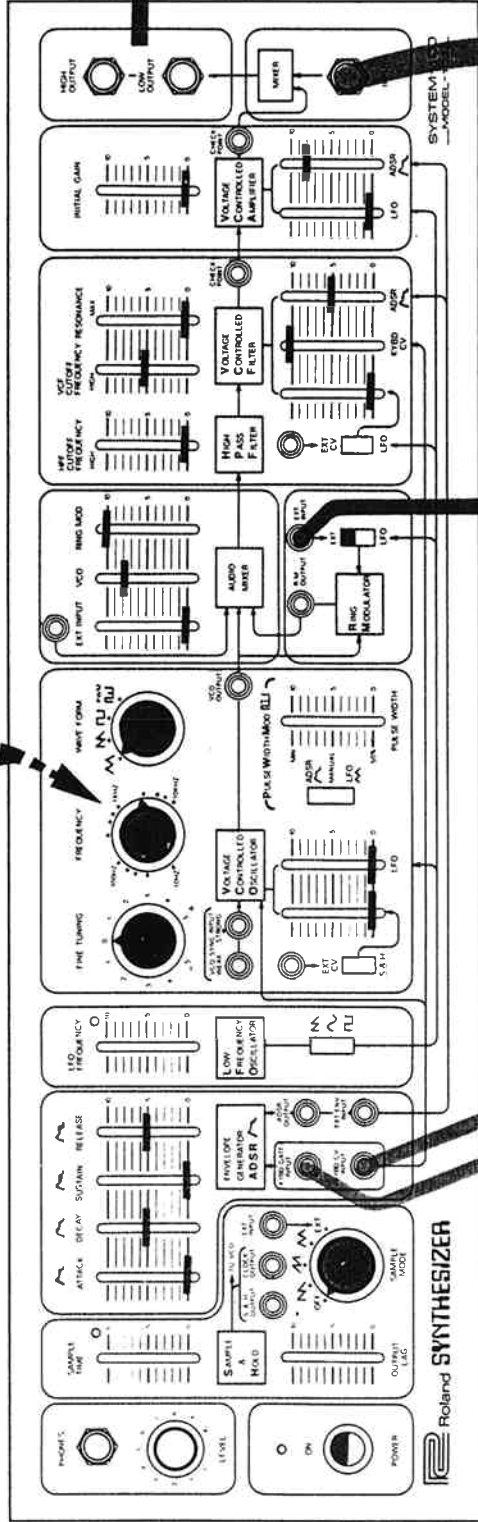


101

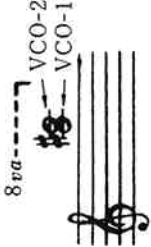




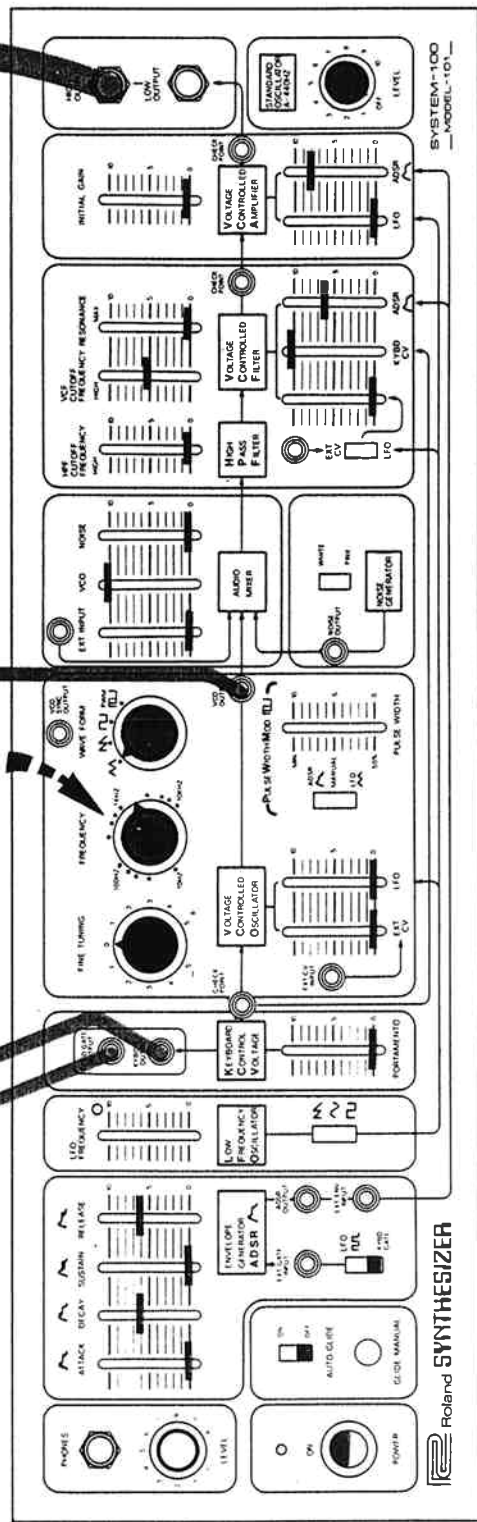
Tune to a major third above VCO-1  
(VCO-1の長3度にセット)



102

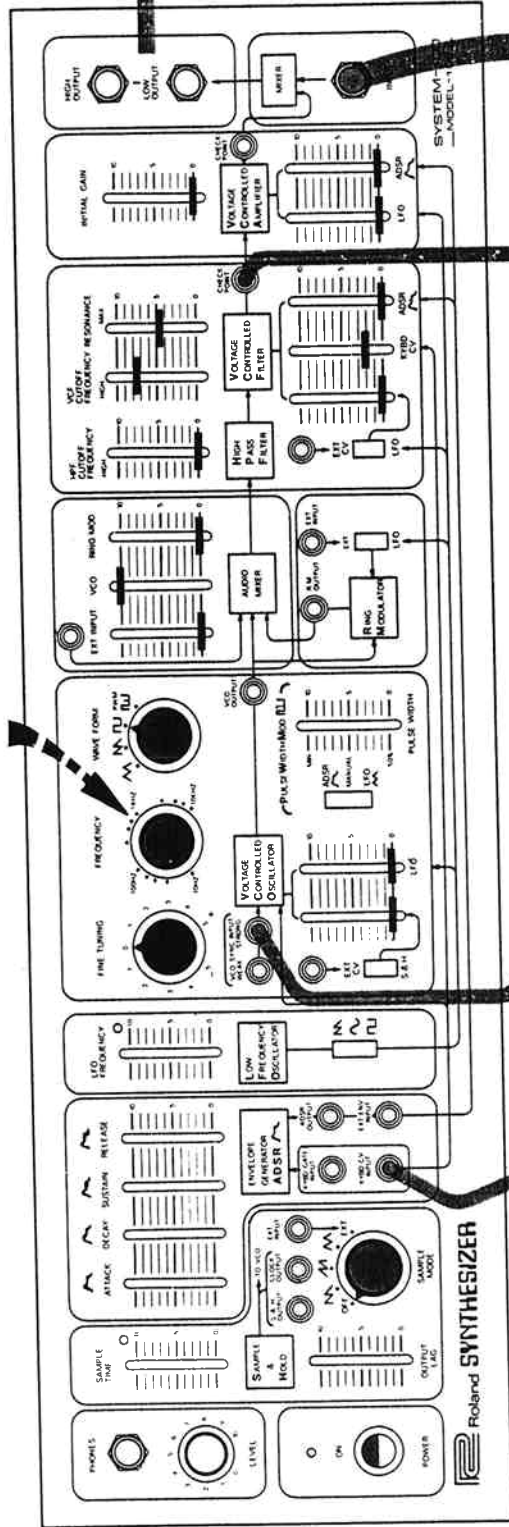


Set at 1760Hz  
(1760Hzにセット)

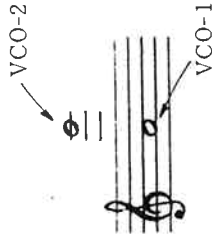


101

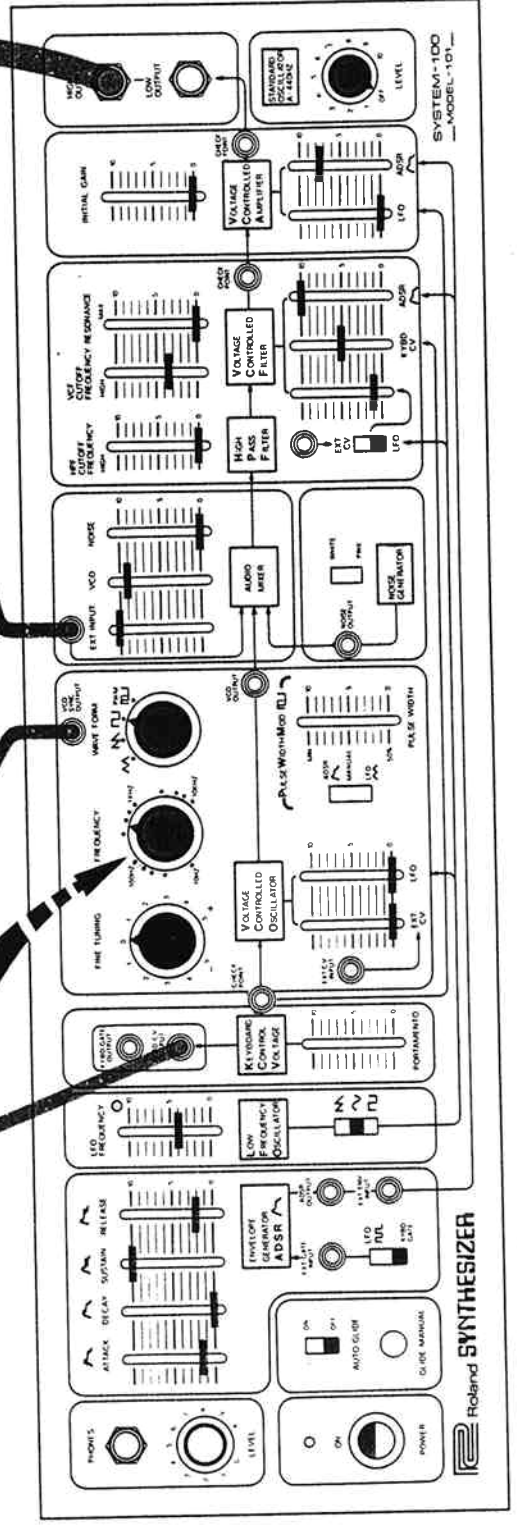
Tune to one octave and a fifth above VCO-1  
(VCO-1より1オクターブと5度高くセット)



102



Set at 440Hz  
(440Hzにセット)

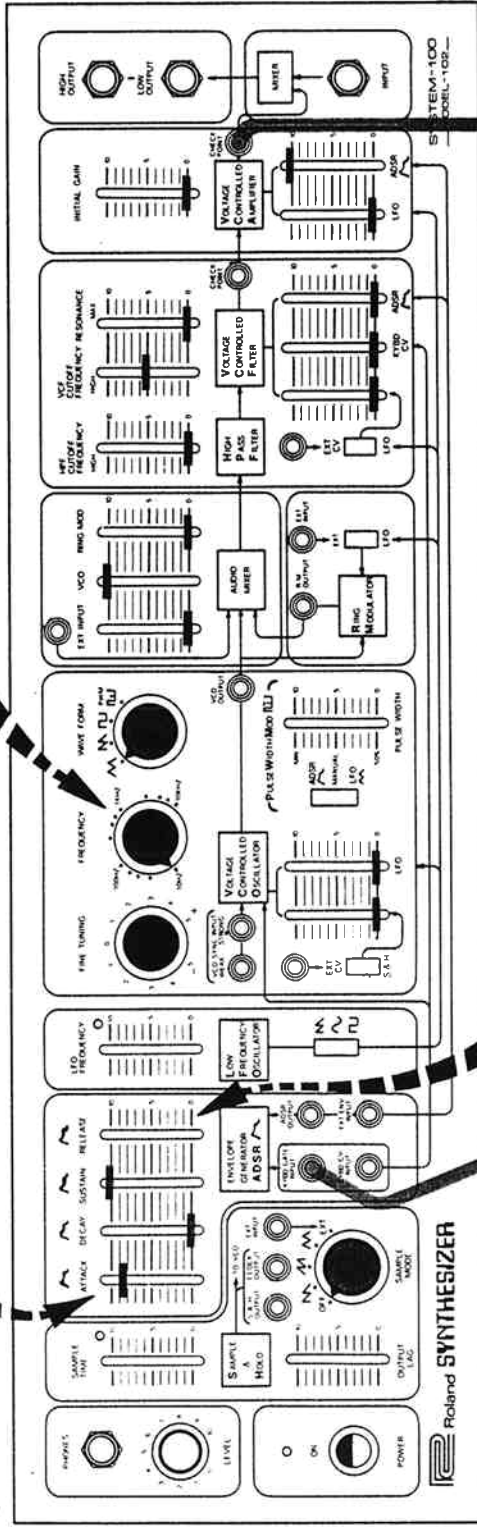


101



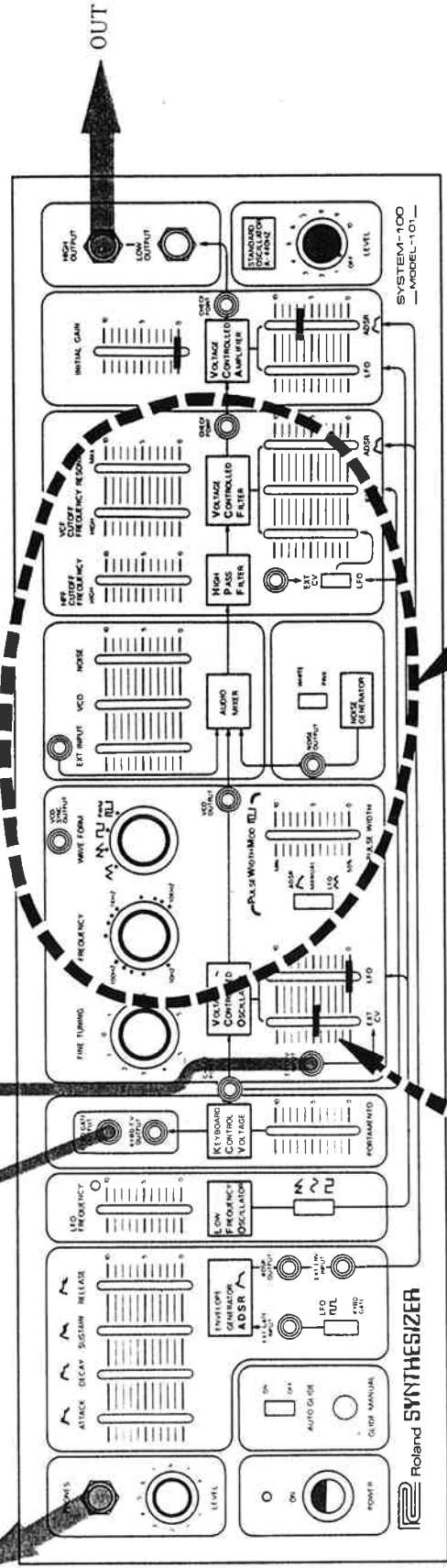
VCO-2 FREQUENCY controls vibrato rate  
(ビブラートの速さをコントロールします)

Controls amount of delay  
(ディレイ・タイムをコントロールします)



102

Monitor here  
(ディレイ効果をモニターする場合はここを使います。)  
Set RELEASE same as ADSR-1  
(基本ユニットのパッチと同じ目盛りにセット)

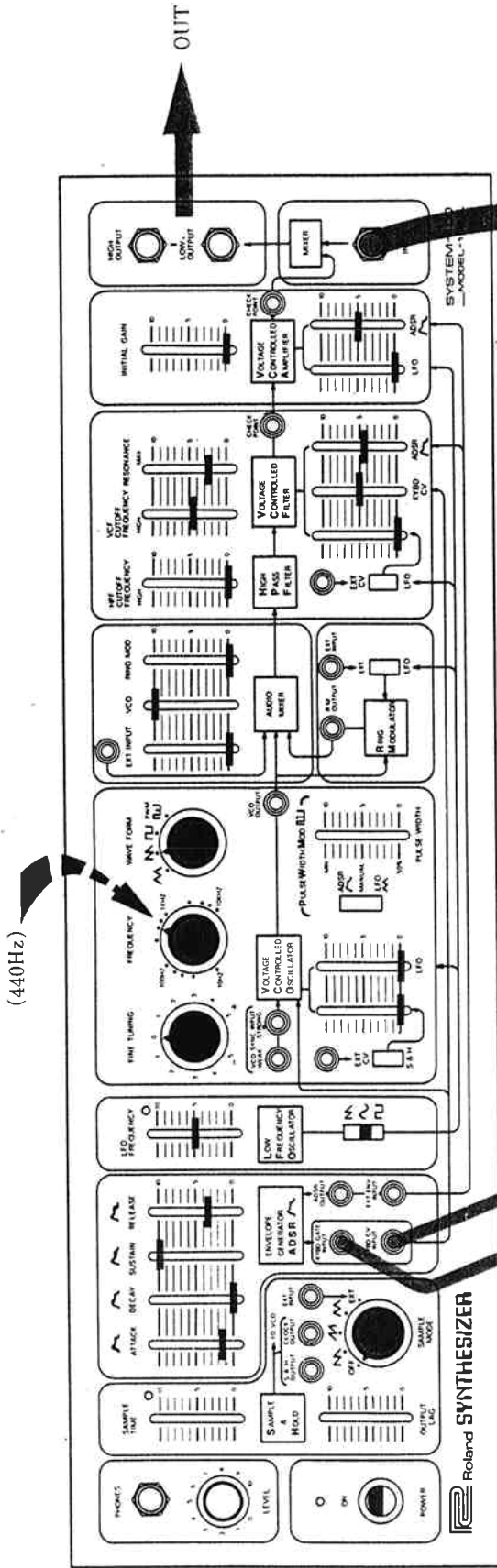


101

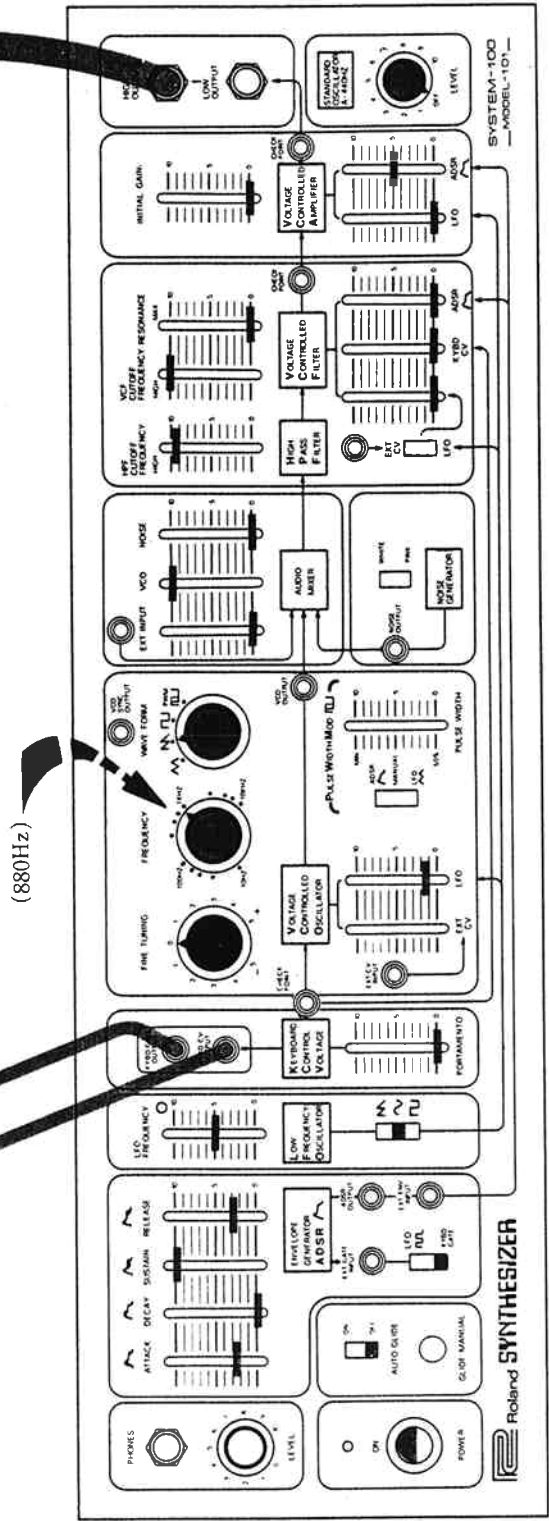
Controls intensity of vibrato  
(ビブラートの深さをコントロールします)

Set other controls for any patch  
(何かのパッチにセットします)

OUT

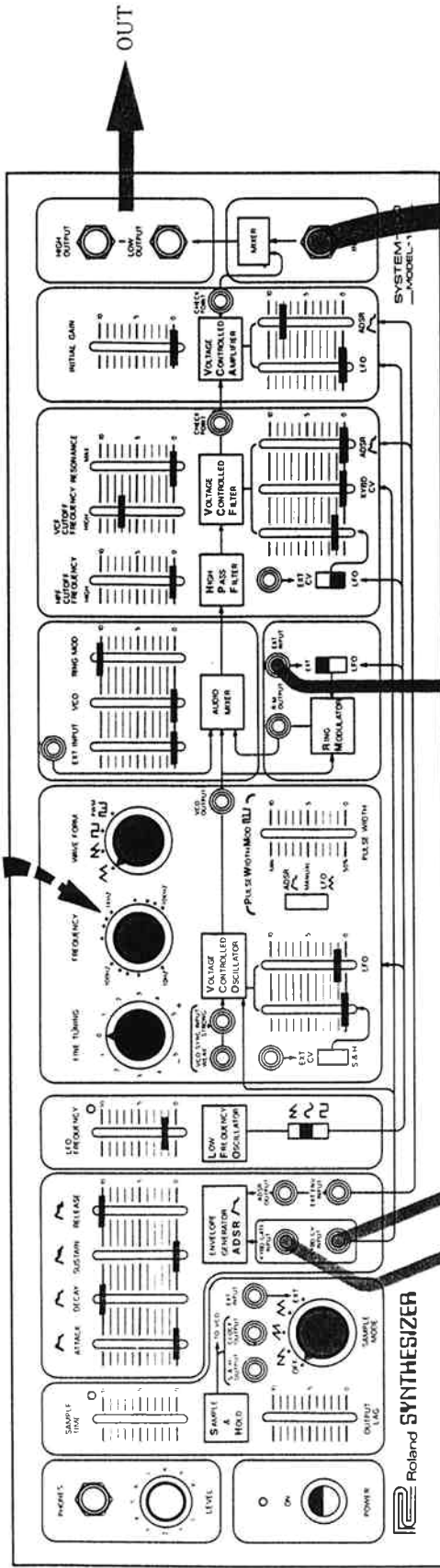


102

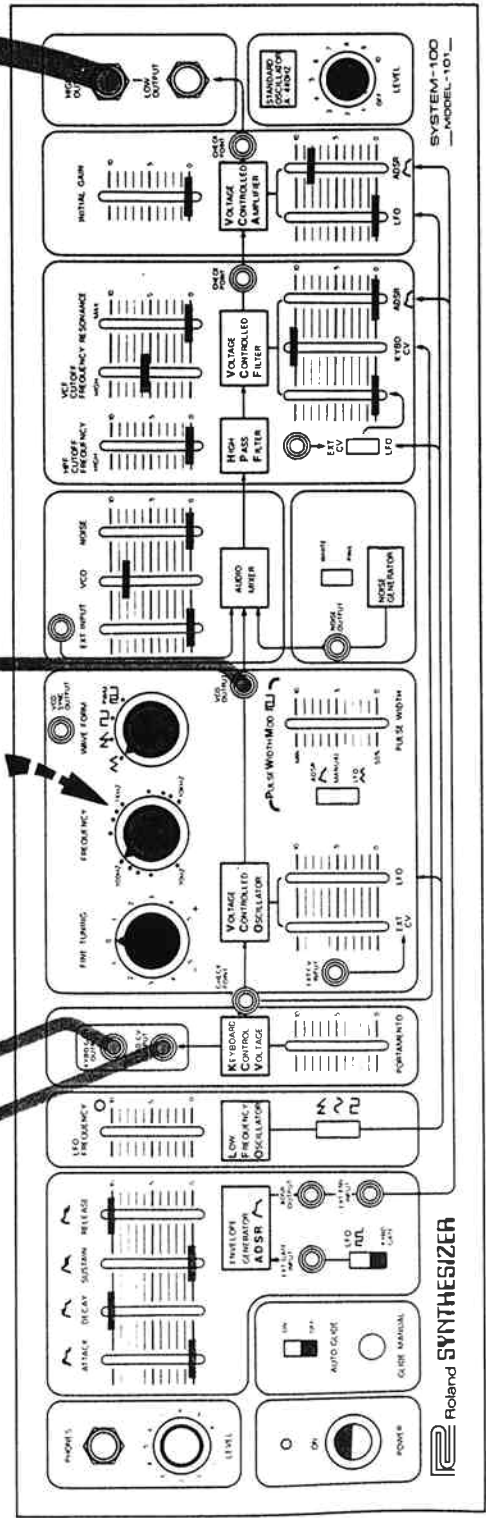


101

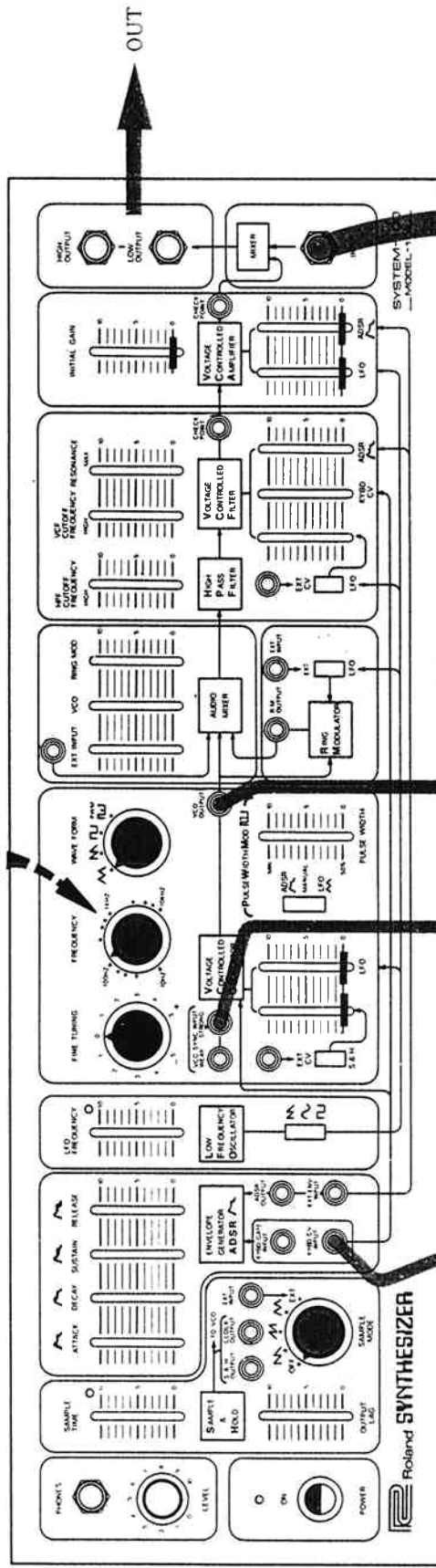
Tune to perfect fourth above VCO-1  
(VCO-1の完全4度上にセット)



Set at 100Hz  
(100Hzにセット)

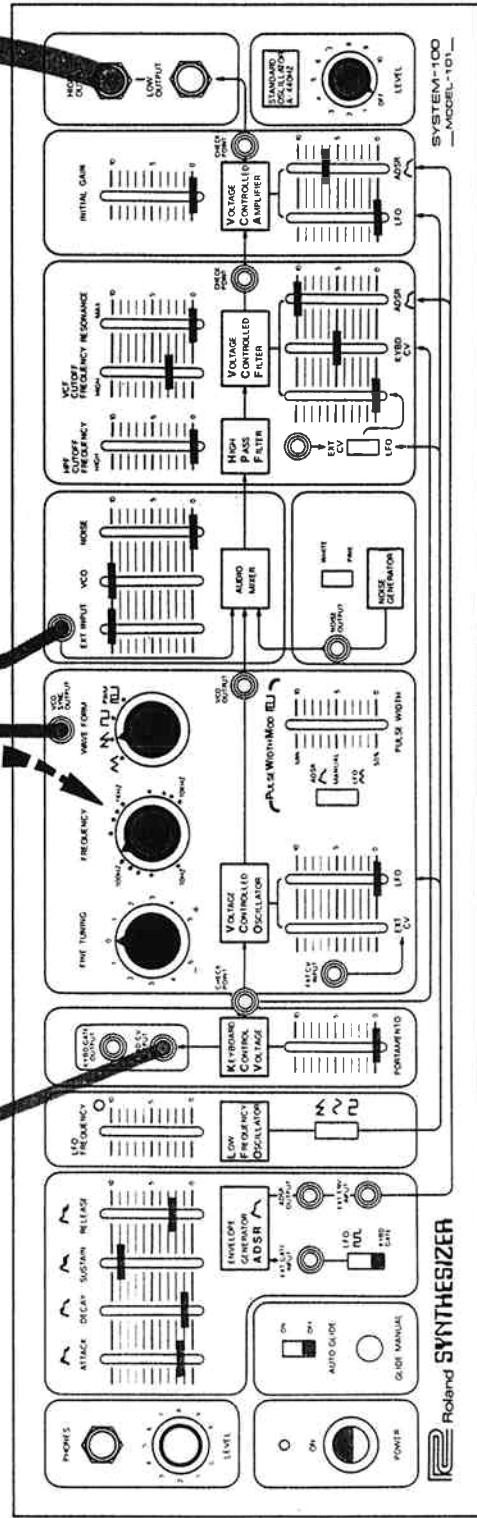


Tune to unison with VCO-1 before inserting sync patch cord  
(シンクロのパッチコードを接続する前にVCO-1とユニゾン:220Hzにセット)

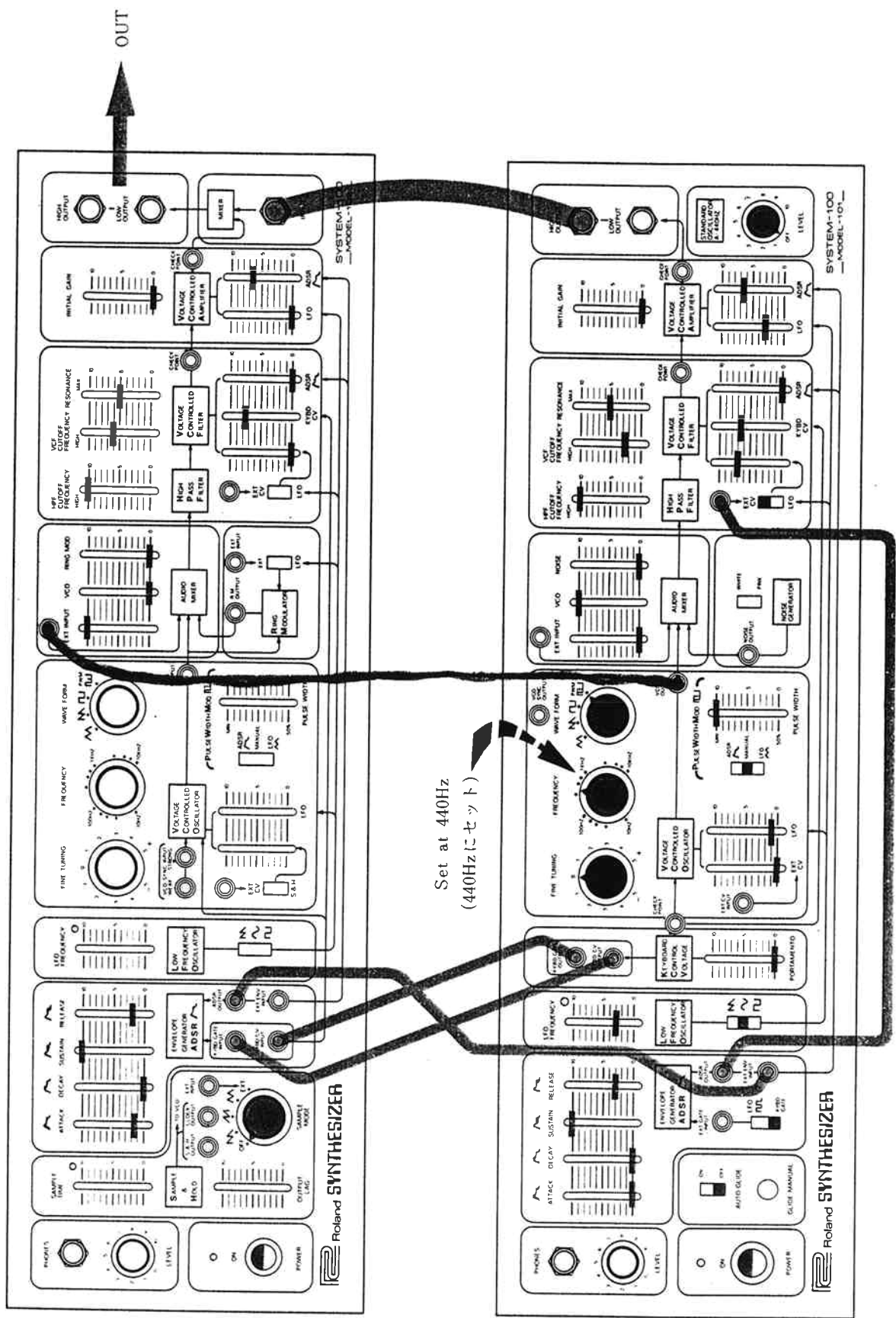


102

Set at 220Hz  
(220Hzにセット)



101



Set at 440Hz  
 (440Hzにセット)

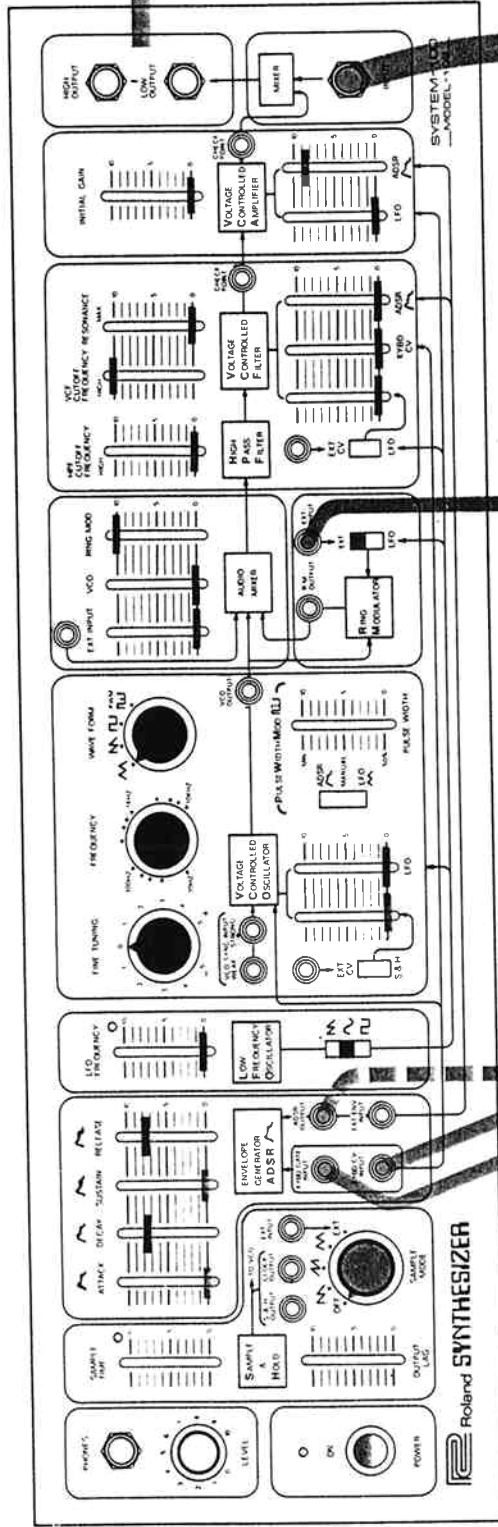
Roland SYNTHESIZER

Roland SYNTHESIZER





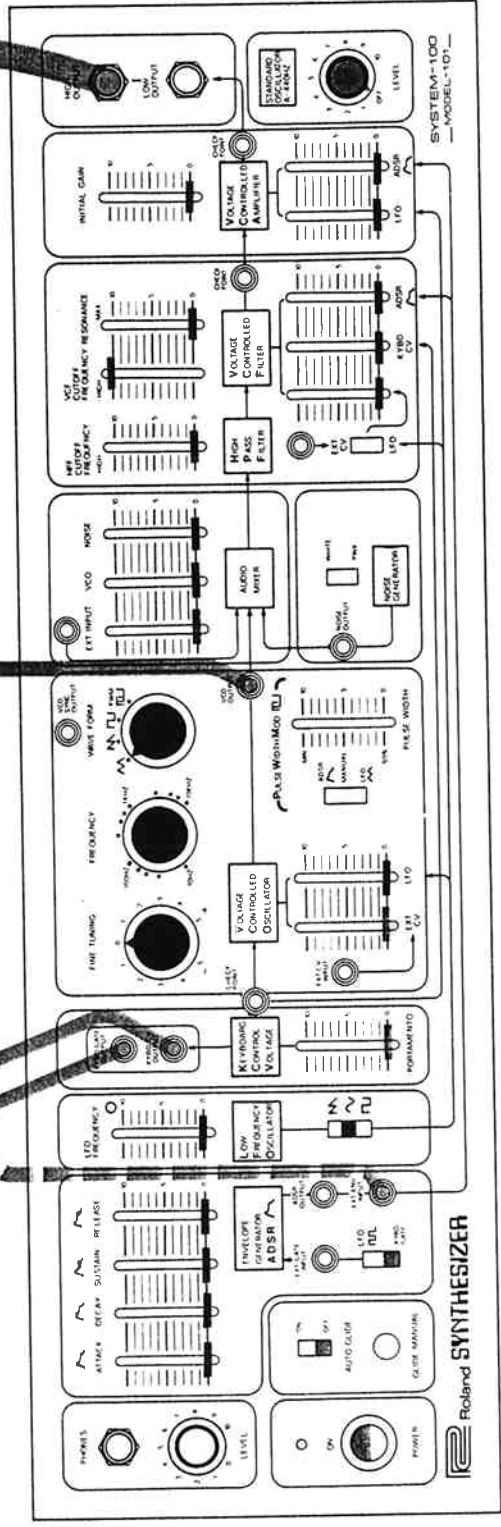
102



Tune VCO-1 and VCO-2 to different intervals in relationship to each other.

VCO-1とVCO-2は違ったピッチにセットし、好みのサウンドが得られるところを探してください。

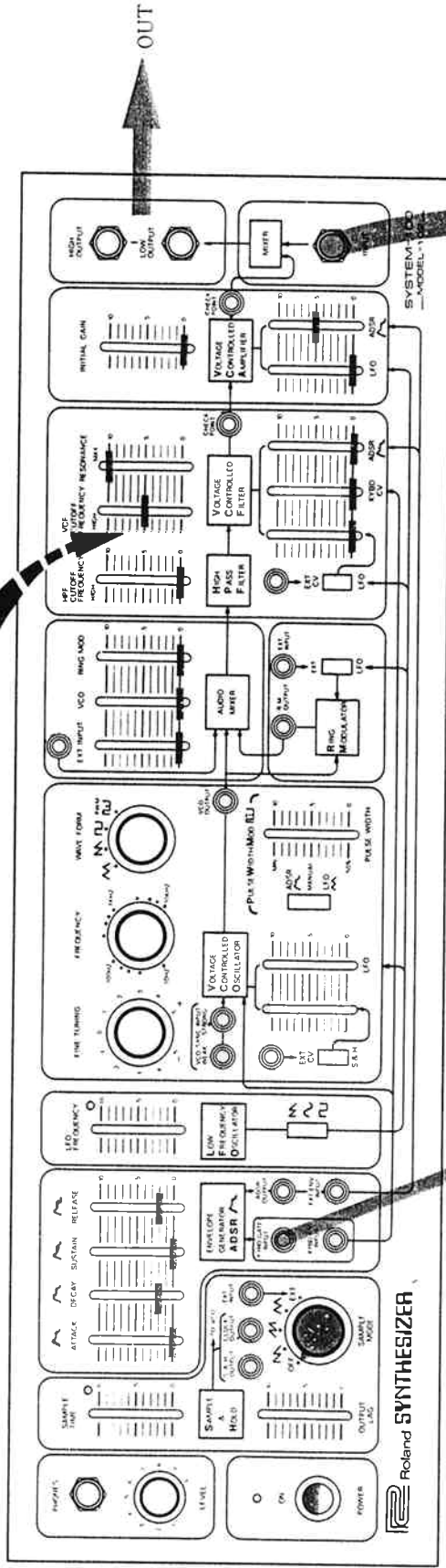
101



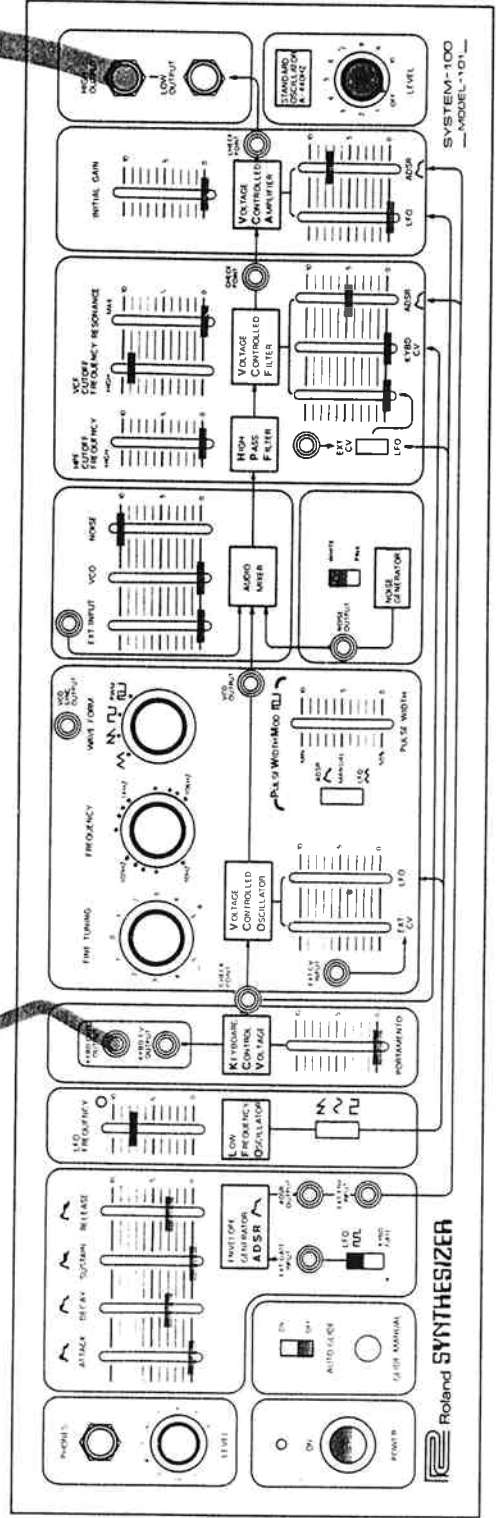
Try all the blue controls for a wide variety of bell-like sounds.  
(青く表示されたつまみを変化させて、さまざまな音のバリエーションをつくってください。)



Drum "tone" control  
 (ドラムのトーンをコントロールできます)



102

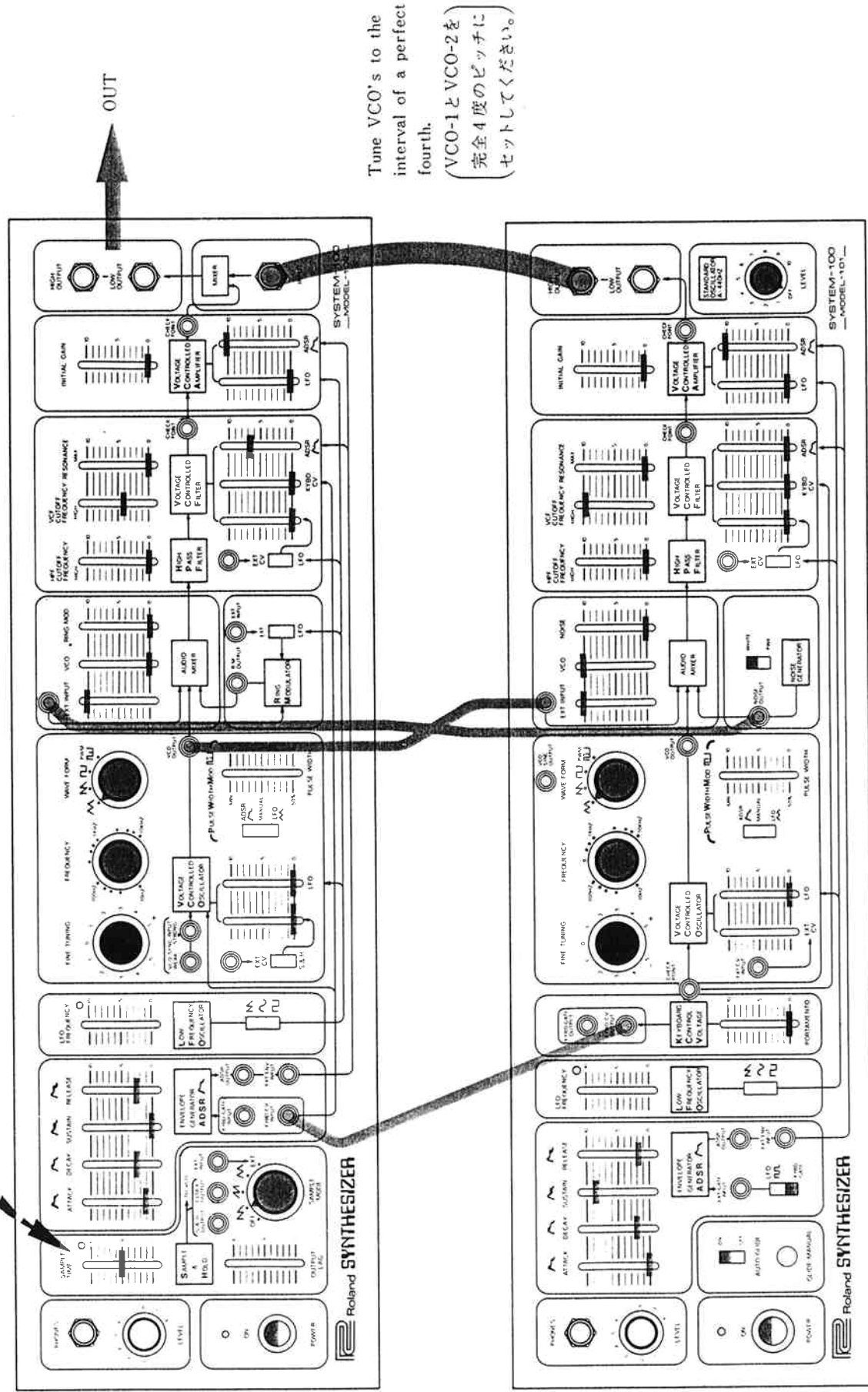


101



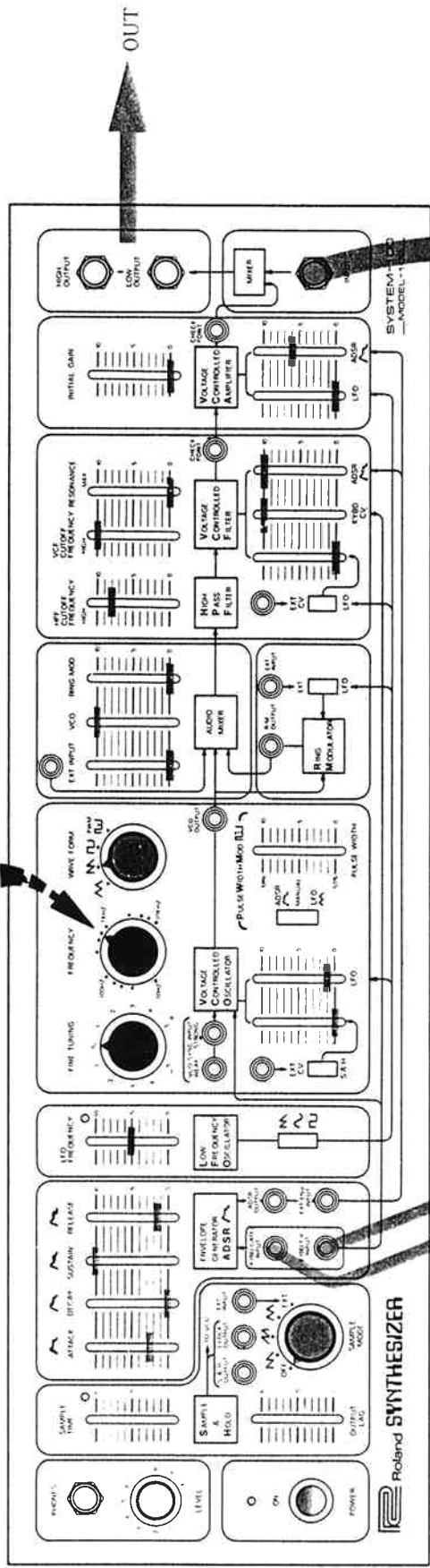


Locomotive speed control  
 (蒸気機関車のスピードをコントロールします)



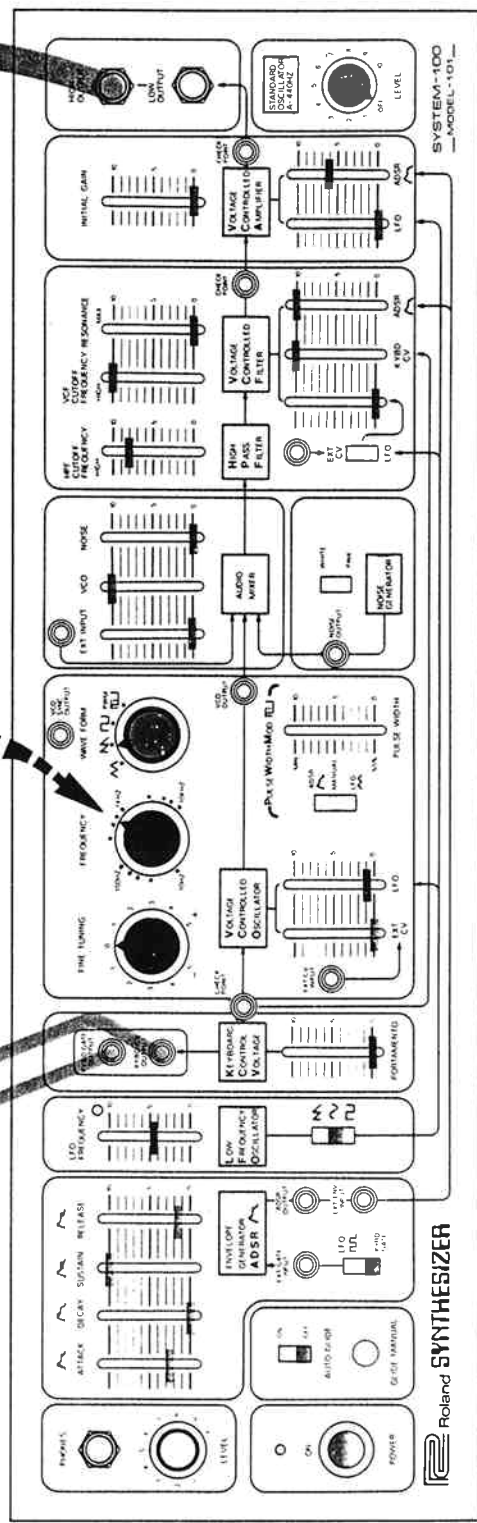
Tune VCO's to the interval of a perfect fourth.  
 (VCO-1とVCO-2を完全4度のピッチにセッティングしてください。)

Press key for whistle  
 (キーを押すと汽笛が出ます)



**102**

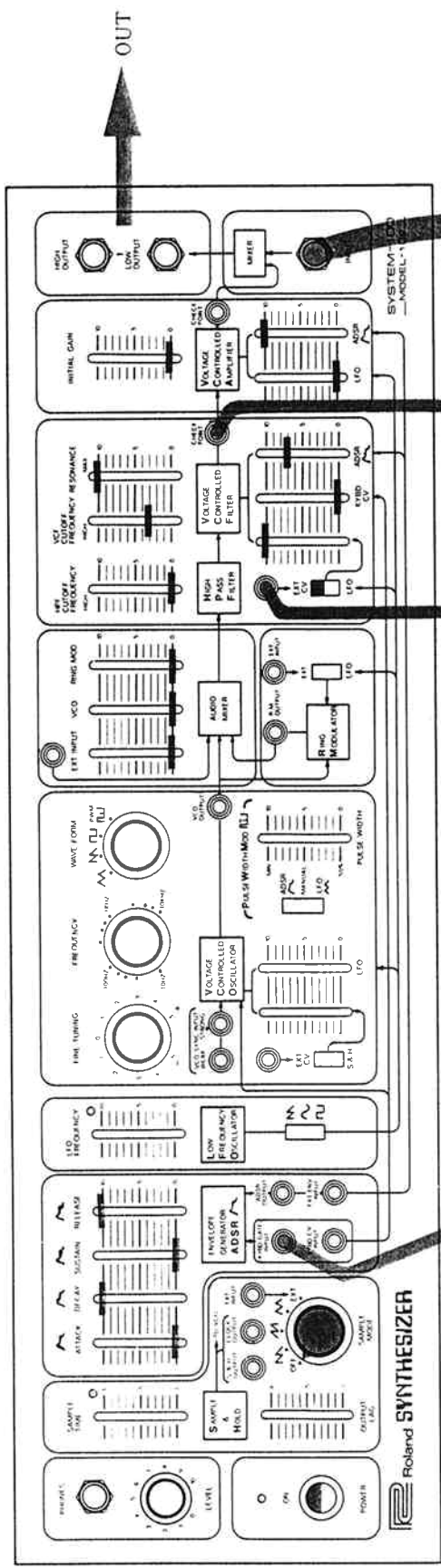
Set LFO's at slightly different rates.  
(2つのLFOのフリケンシーをわずかにずらします。)



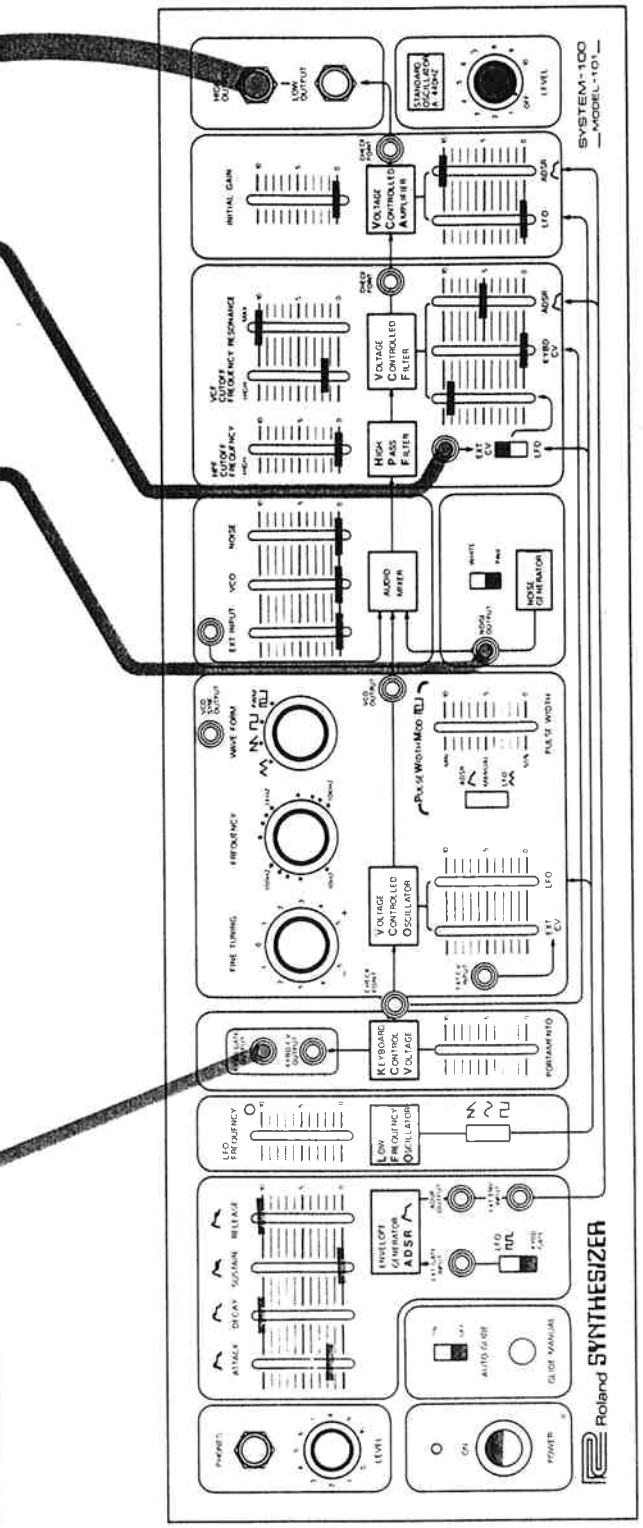
**101**

Roland **SYSTEM-101**

OUT



102



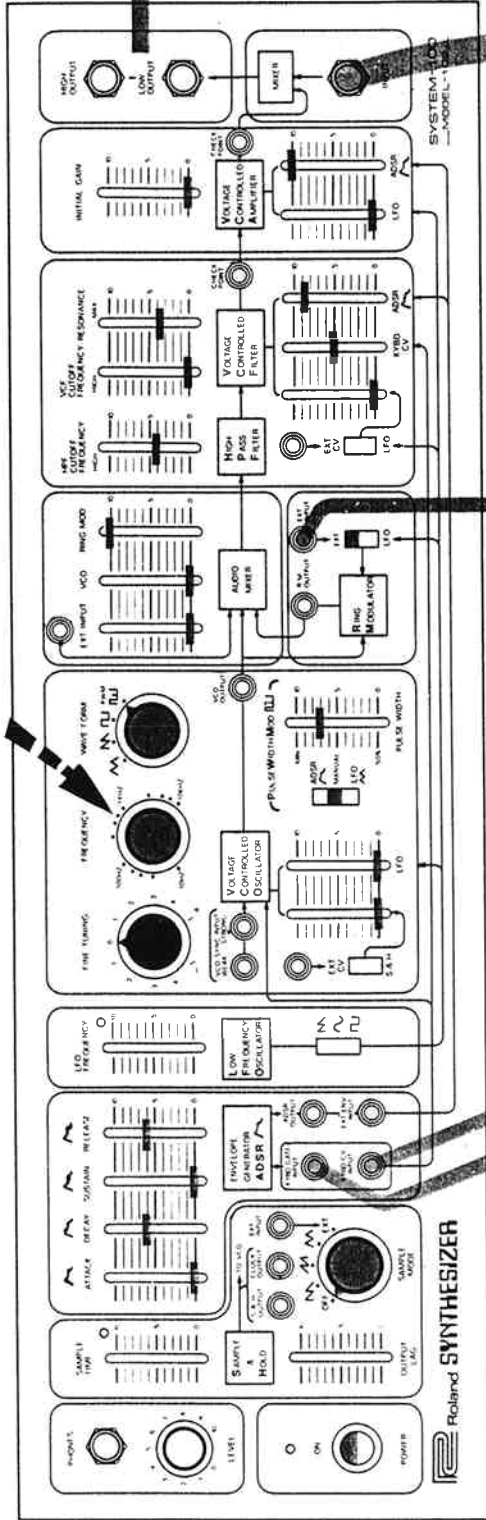
101



# PATCH 19

ROMPANI  
54701

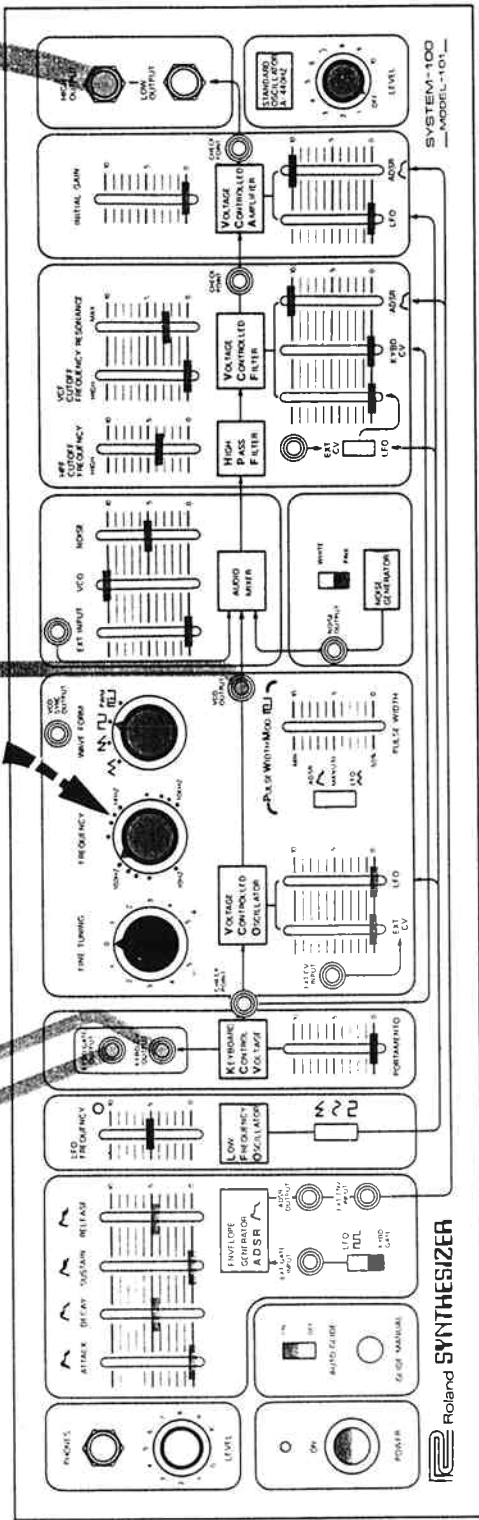
Tune to a perfect fifth above VCO-1  
(VCO-1の完全5度上にセット)



1 102

VCO-2  
VCO-1

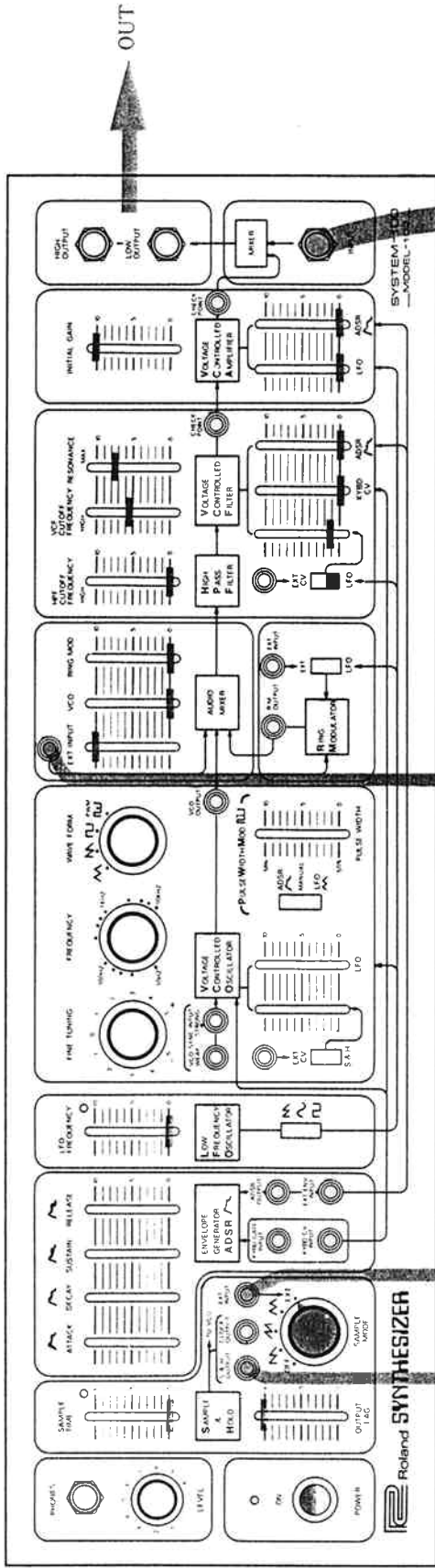
Set at 110Hz.  
(110Hzにセット)



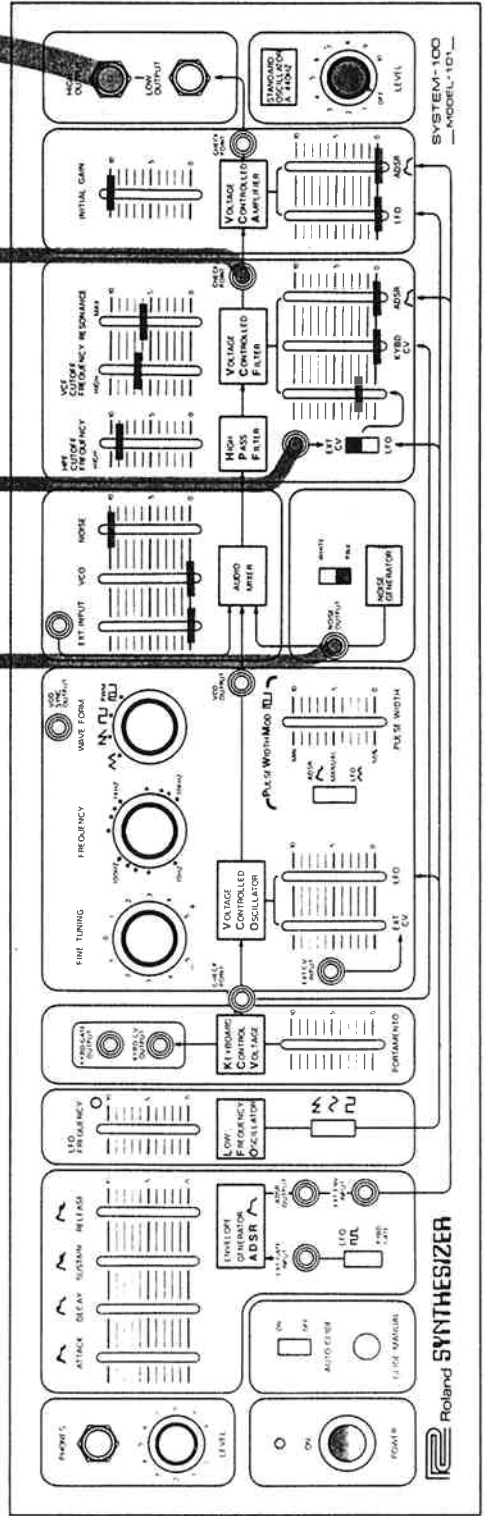
1 101

The best drum sound is produced when the two VCO's are slightly mistuned.  
(2つのVCOの完全5度の音程はわずかにずれていた方が太鼓の音は良くなります。)



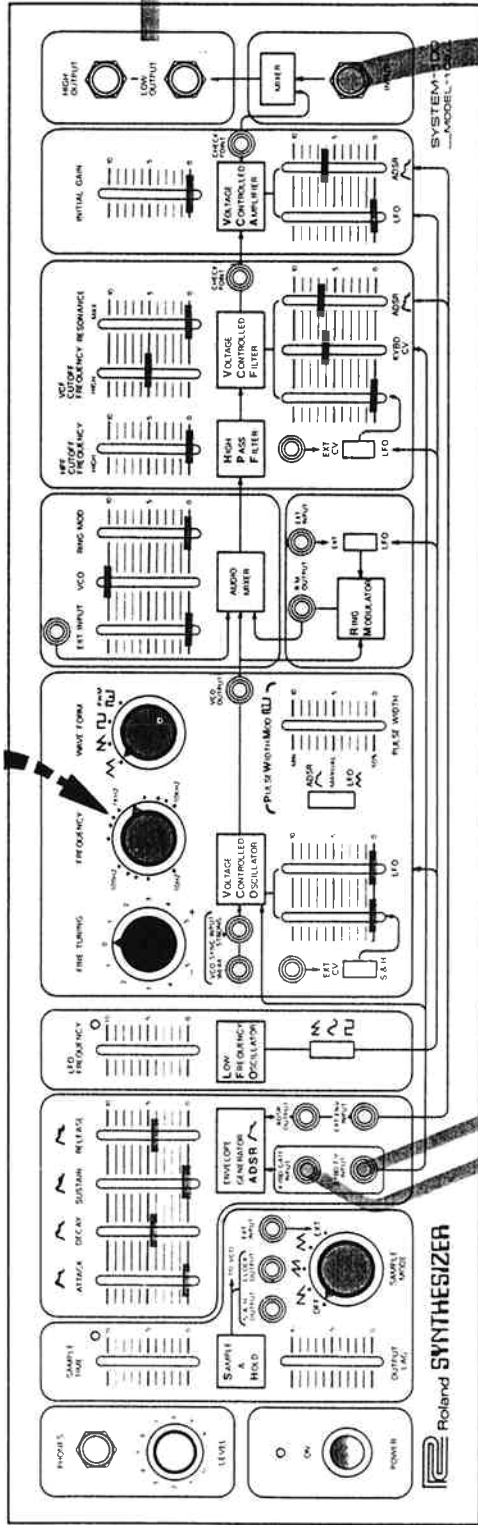


102



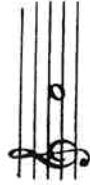
101

Tune to two octaves above VCO-1  
(VCO-1の2オクターブ上 : 1720Hzにセット)



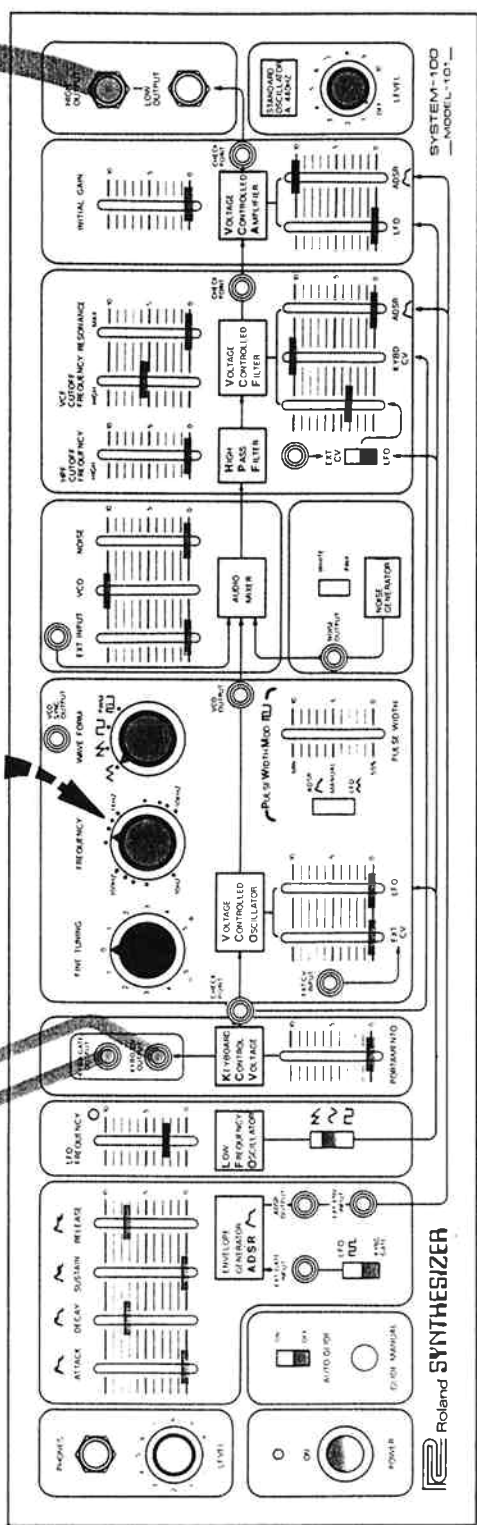
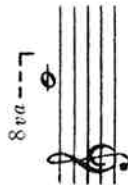
1 102

VCO-1:



Set at 440Hz.  
(440Hzにセット)

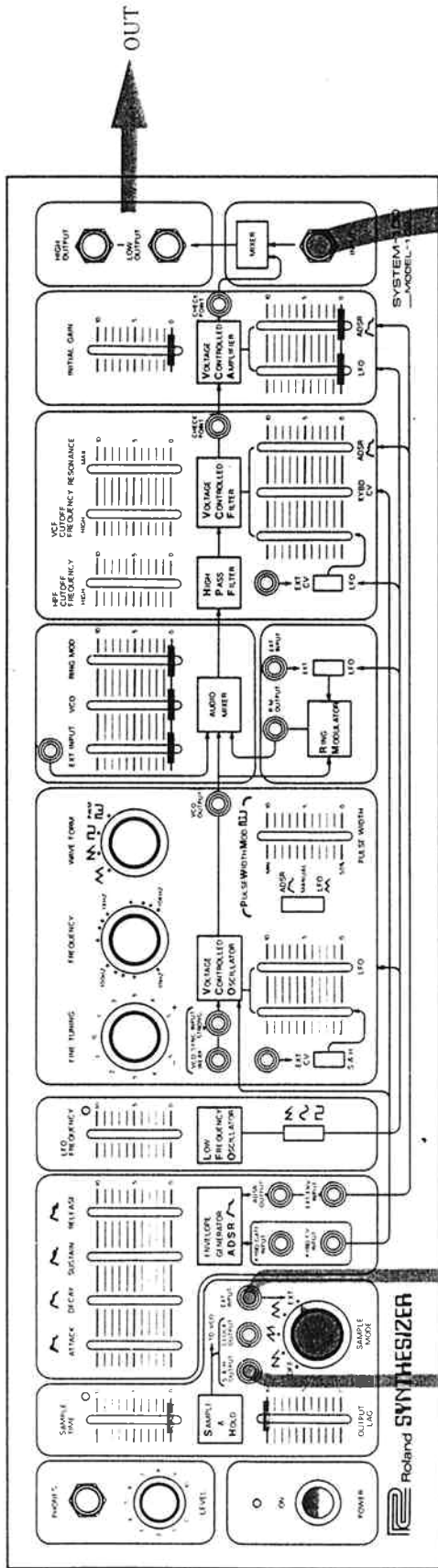
VCO-2:



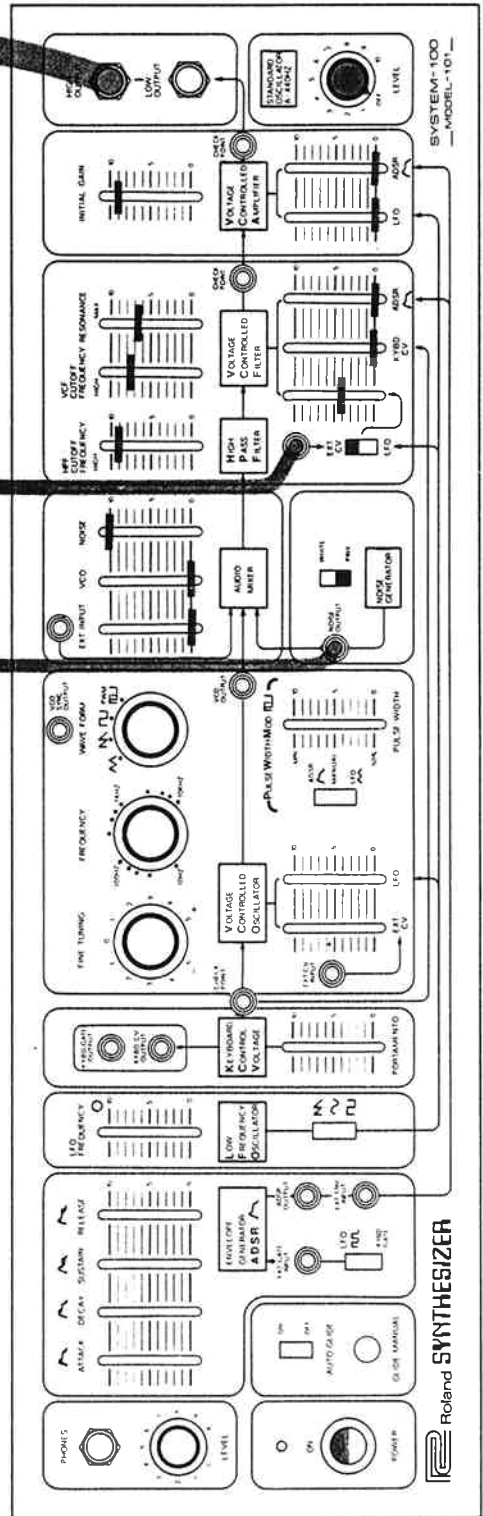
1 101

Roland SYNTHESIZER

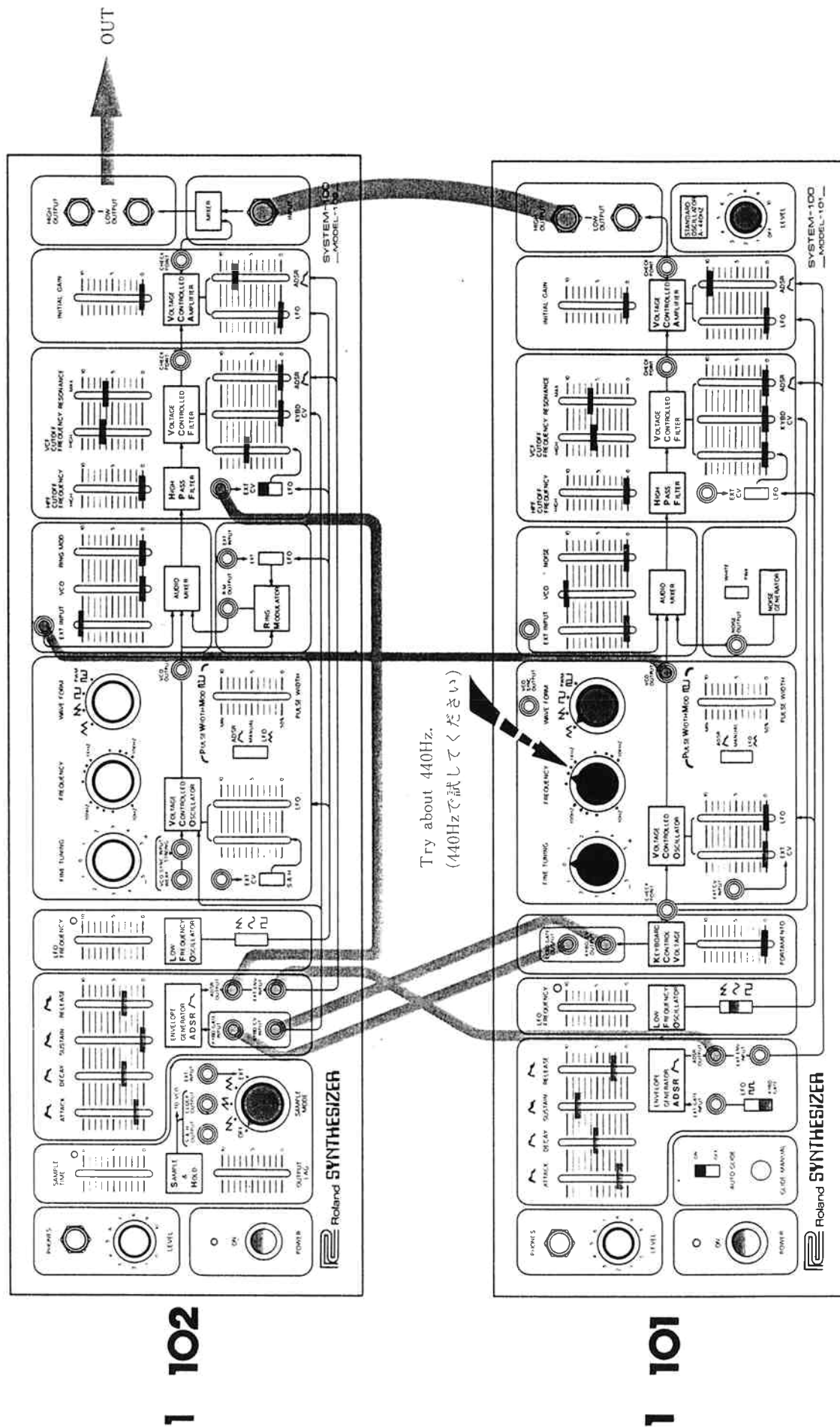
SYSTEM-100  
MODEL 101



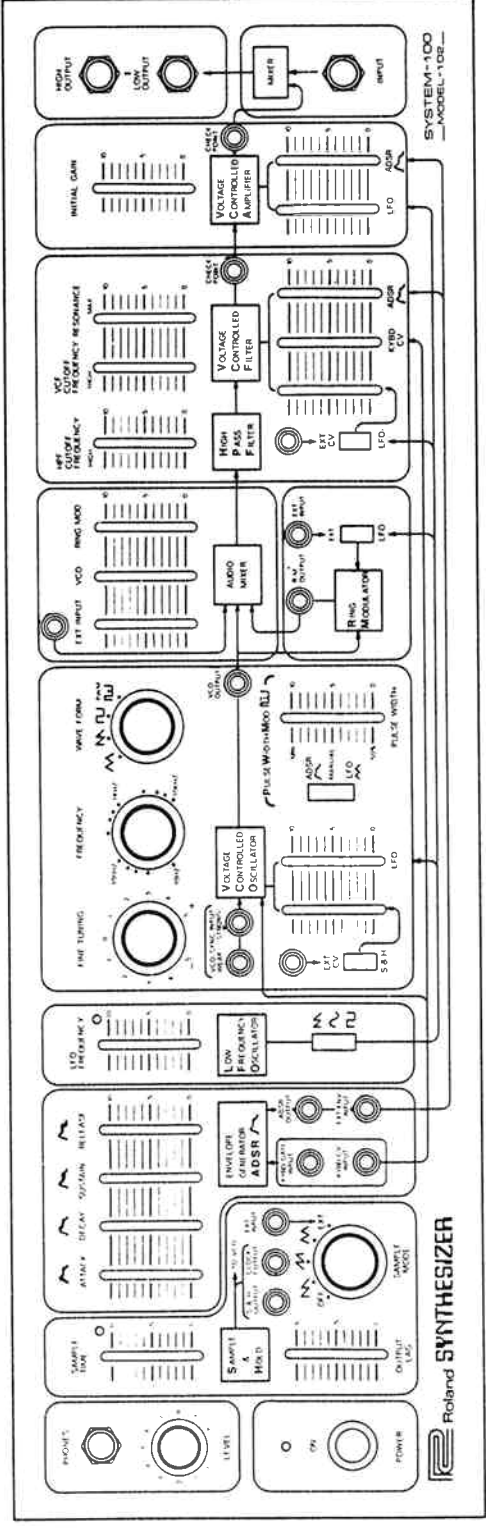
102



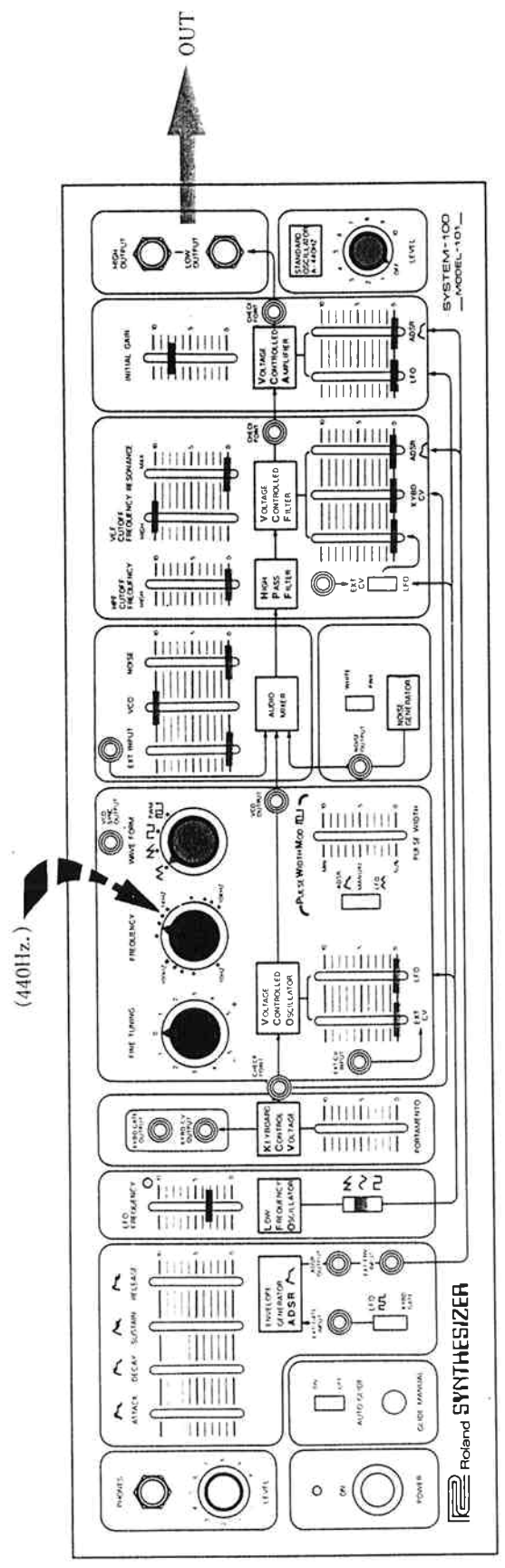
101



Pressing a key in the middle of the keyboard produces a "you"-like sound.  
(鍵盤中央部のキーを押します。)



102

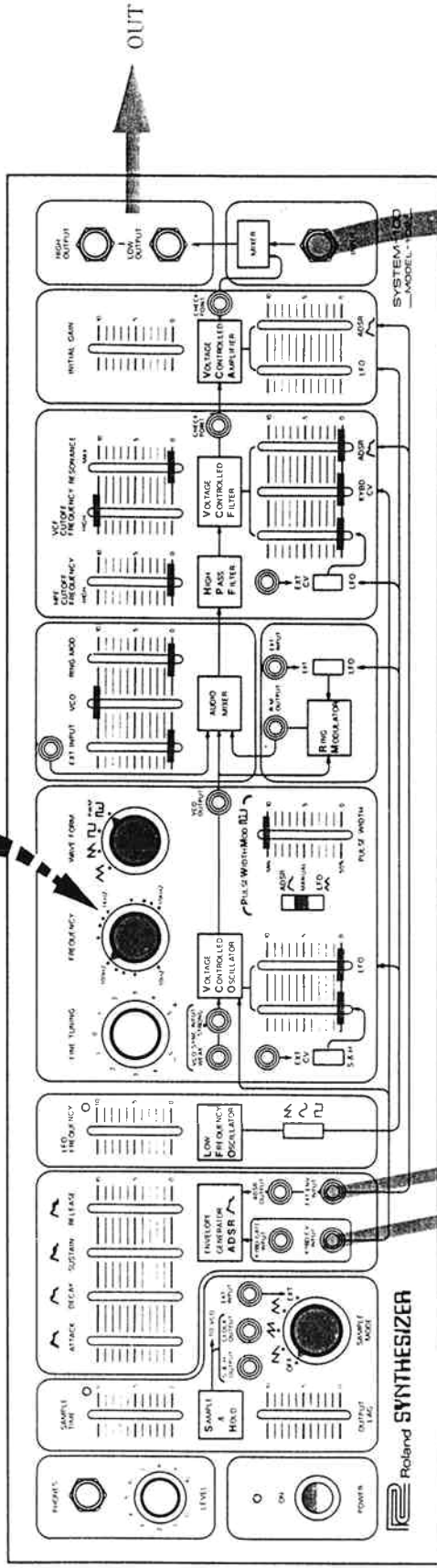


101



# 1 PATCH 250 ADSR TEST (ADSRテスト)

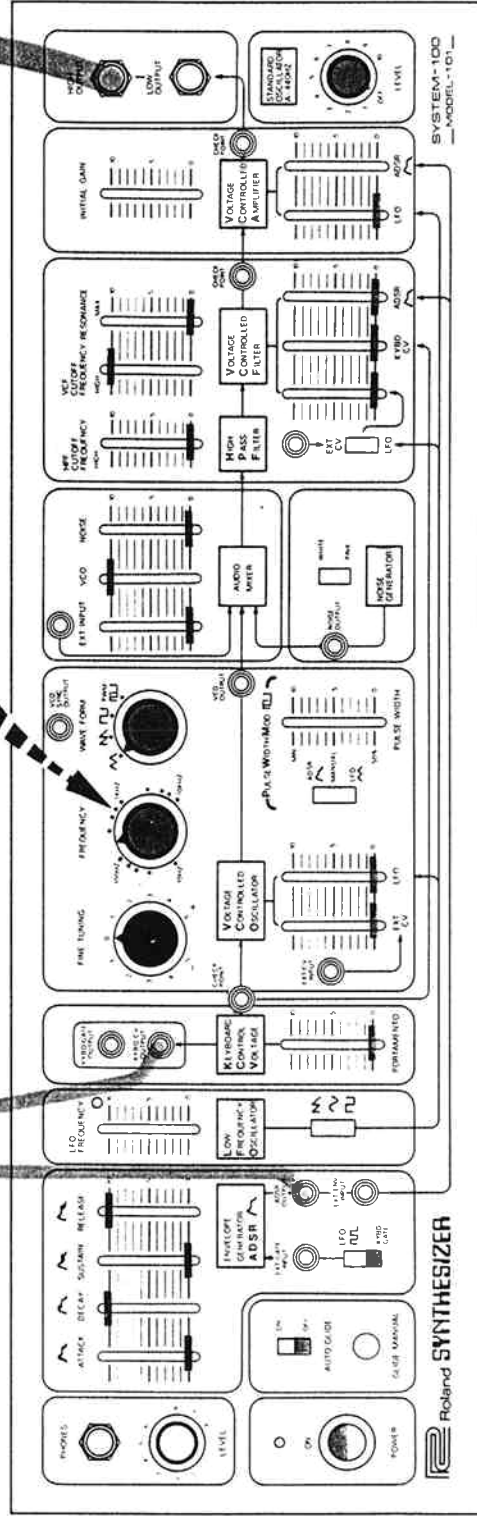
Set at about 100Hz.  
(100Hzぐらいにセット)



## 1 102

Couples keyboard control  
Voltage to 102 Unit  
(102にキーボード・コントロール  
電圧を送ります。)

Tune to one octave above VCO-2  
(VCO-2の1オクターブ上:200Hzぐらいにセット)



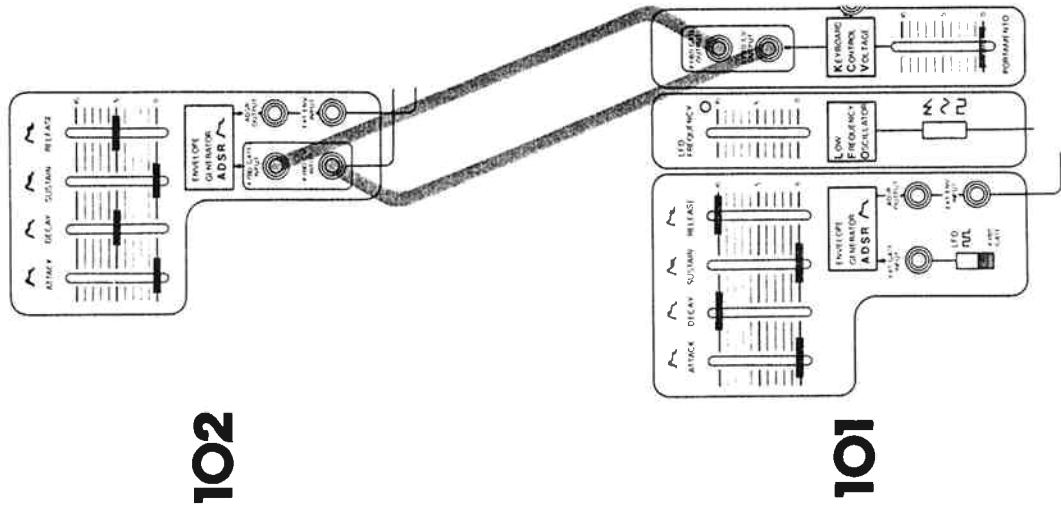
## 1 101

The lower ADSR controls both units.  
(101のADSRが2つのユニットをコントロールします。)



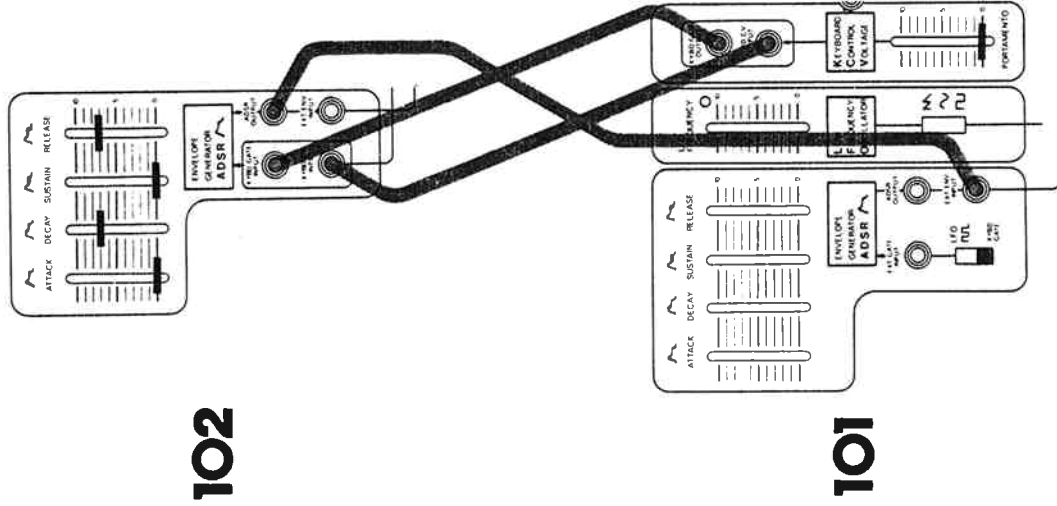
# PATCH 25b

All other controls should be set as shown in Patch 25a.  
 (表示以外のコントロールはパッチ25aと同じところにセットします。)



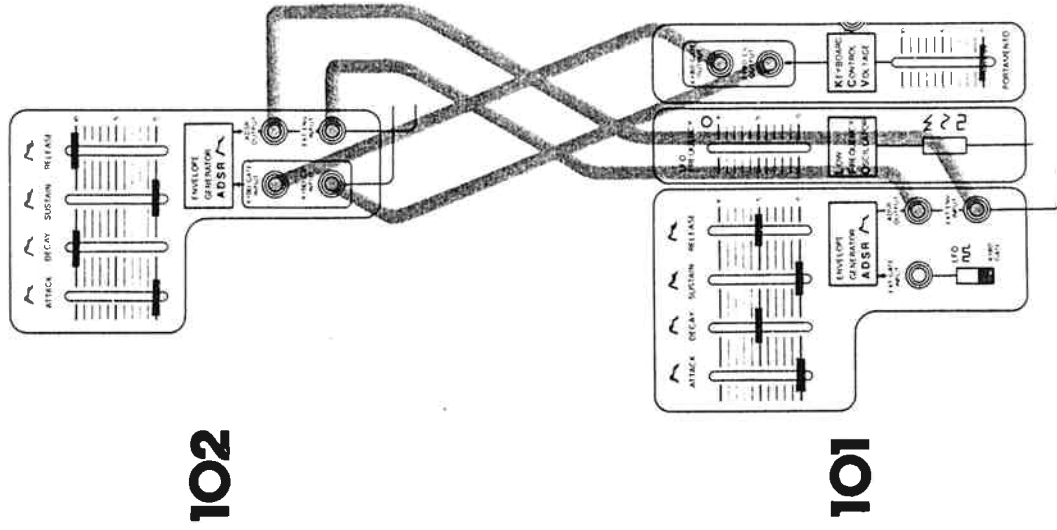
Each ADSR controls its own unit.  
 (各ADSRはそれぞれのユニットをコントロールします。)

# PATCH 25c



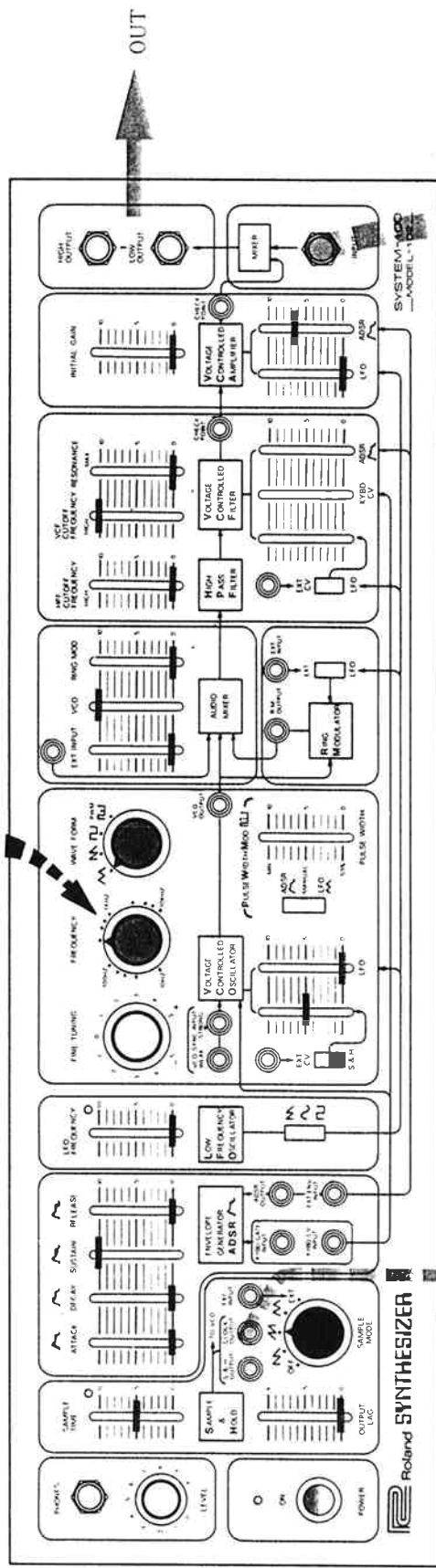
The upper ADSR controls both units.  
 (102のADSRが2つのユニットをコントロールします。)

# PATCH 25d

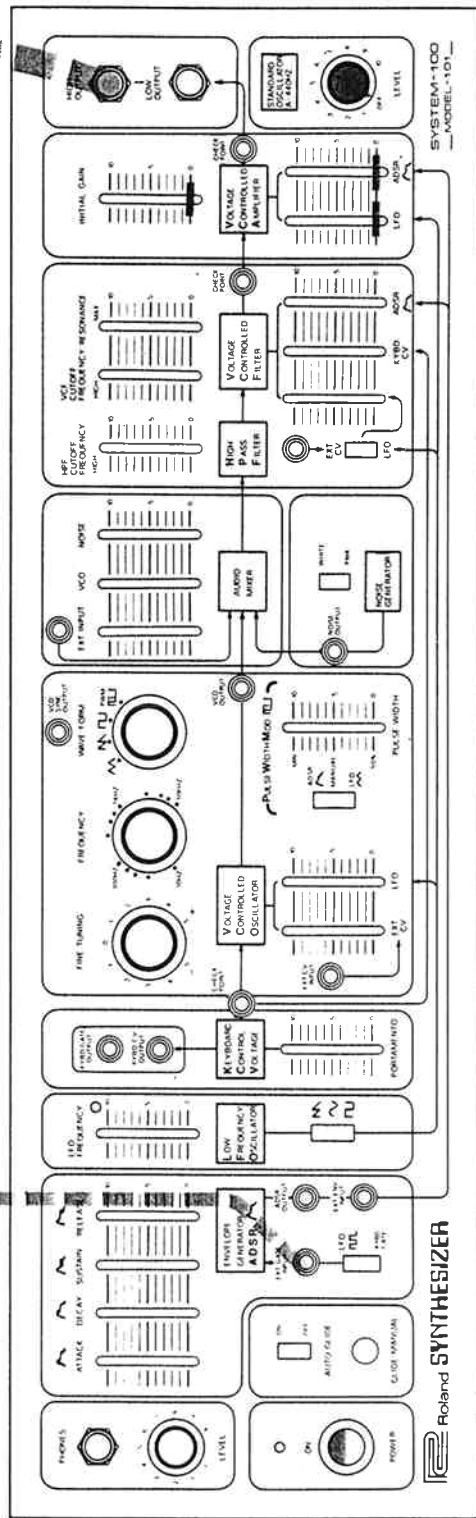


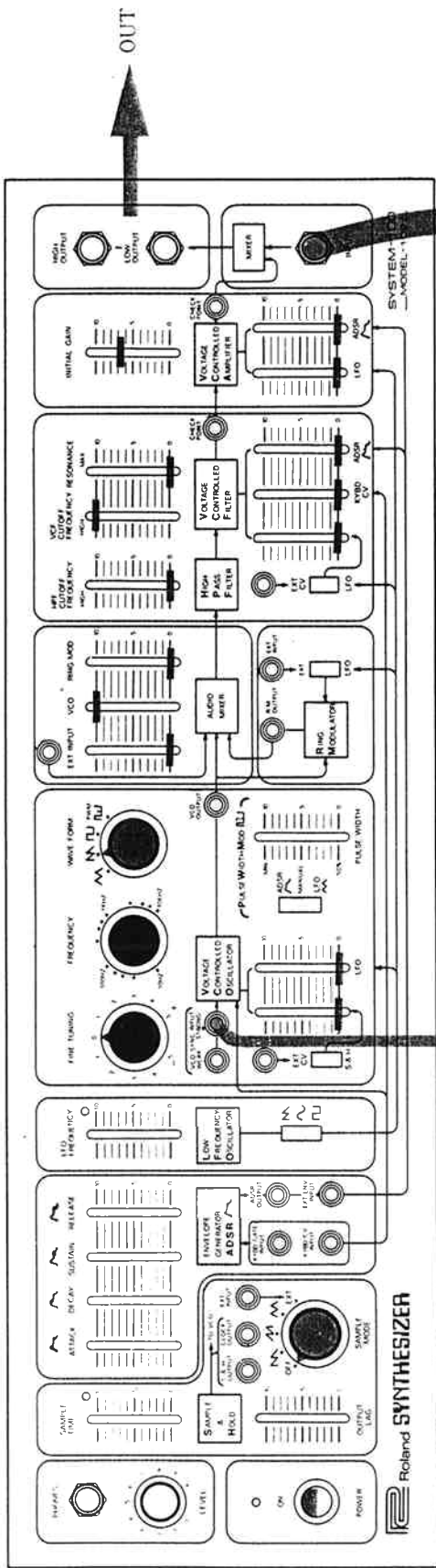
The upper ADSR controls the lower unit; The lower ADSR controls the upper unit.  
 (102のADSRが101を、101のADSRが102をコントロールします。)

Set at about 300Hz.  
(300Hzぐらいにセット)



Use this when you want to trigger  
both ADSR's with the S/H.  
(ADSR-1をADSR-2と同時に作動させるには  
この接続方法をとります。)

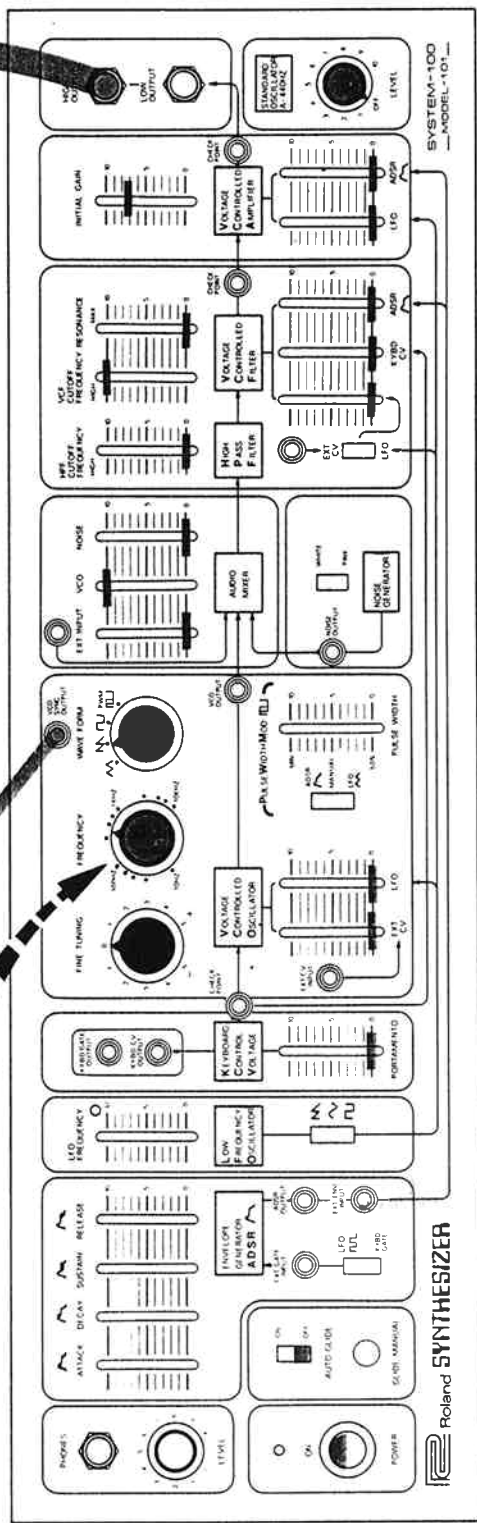




102

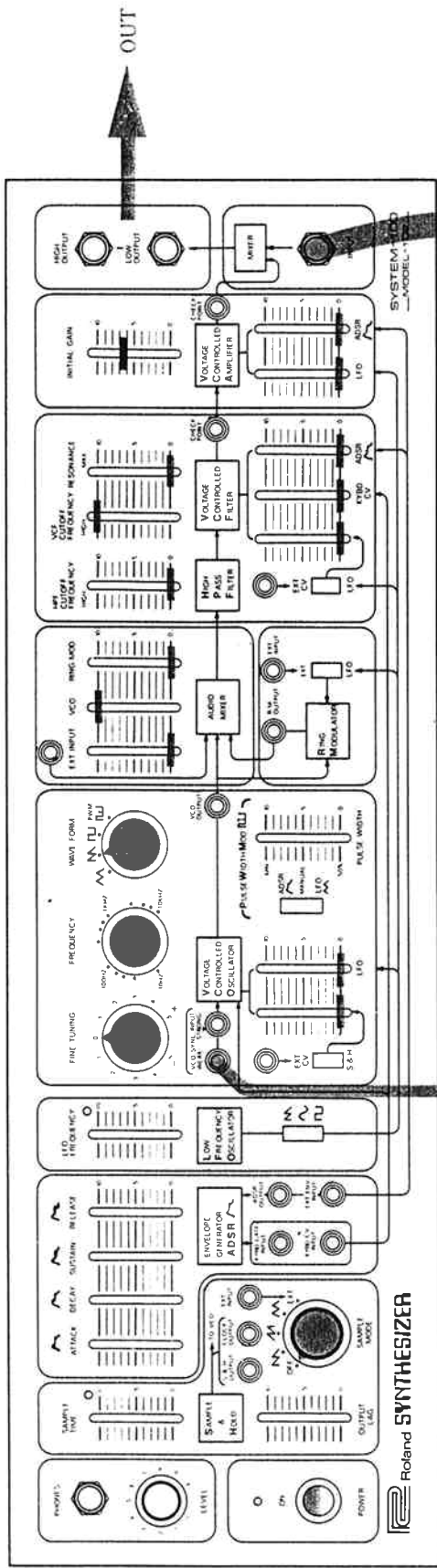
Sync Patch cord  
 (シンクロ・パッチコード)

Set at 440Hz  
 (440Hzにセツト)



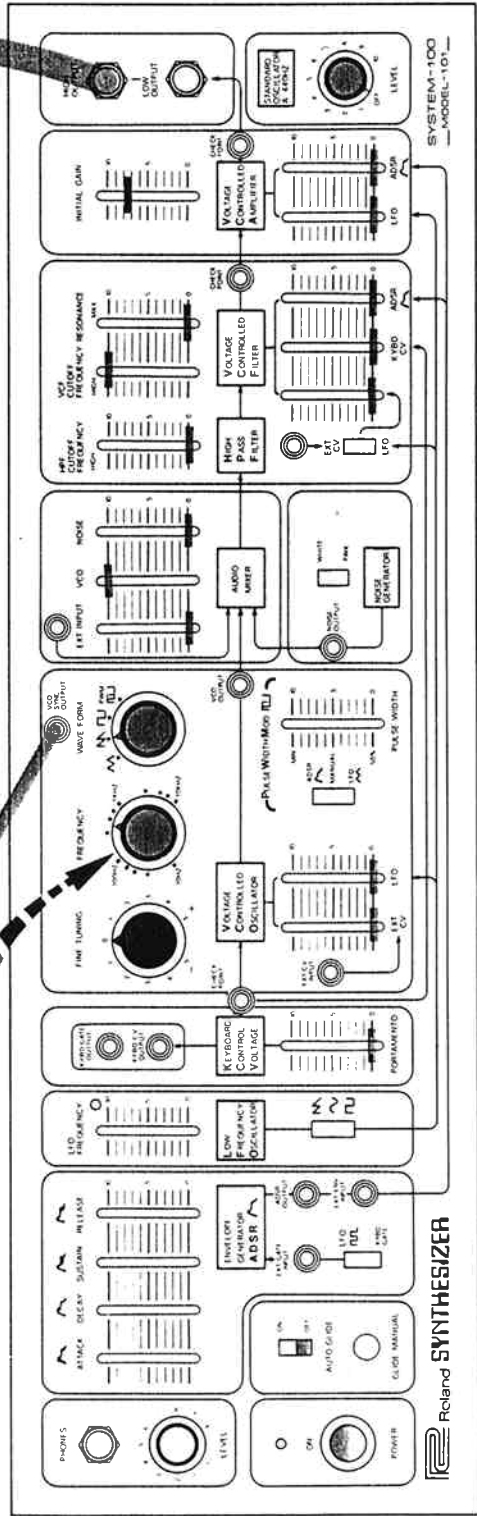
101

**PATCH 28**  
 100 Weak Sync Test  
 (60-70-75-80-85-90-95-100)



1 102

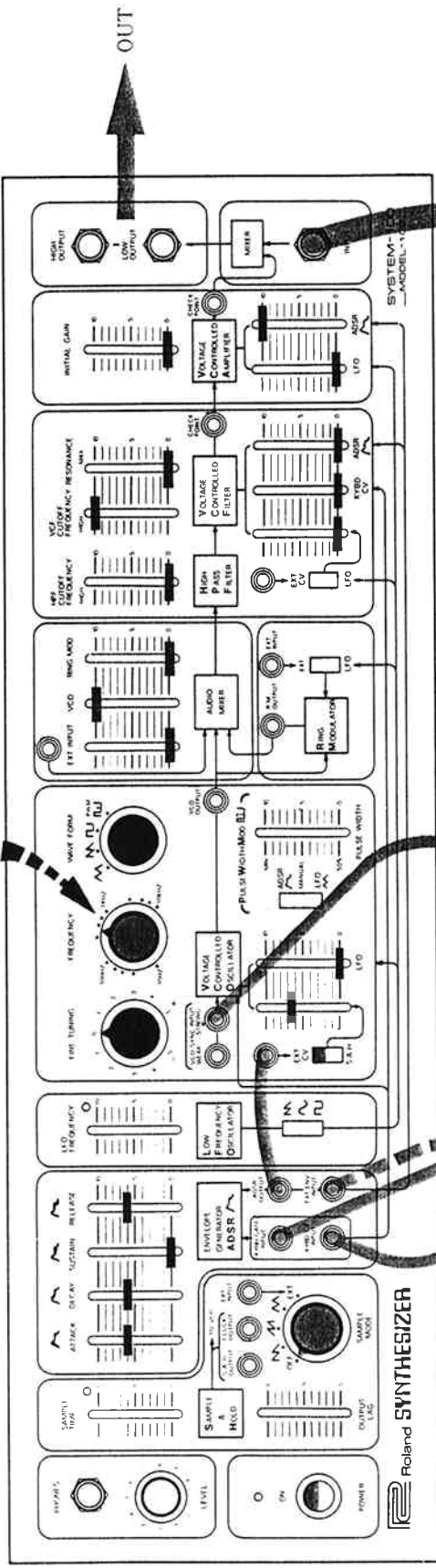
Set at 440Hz.  
 (440Hzにセット)



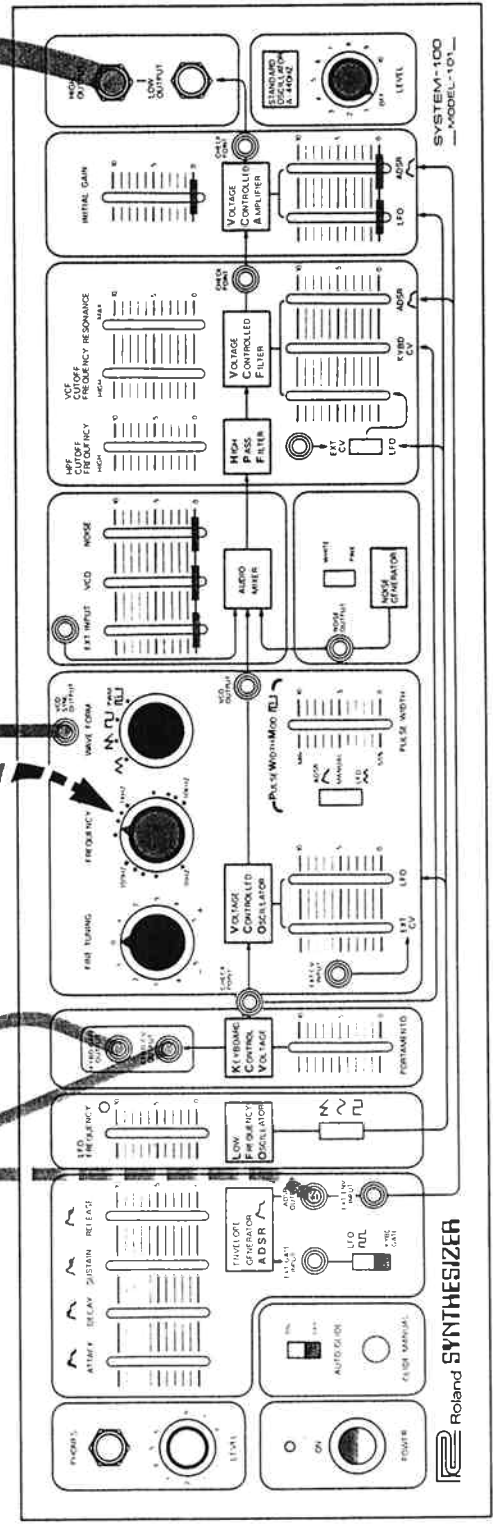
1 101

Tune to unison  
(VCO-1と同じ440Hzにセット)

Set at 440Hz.  
(440Hzにセット)



102



101

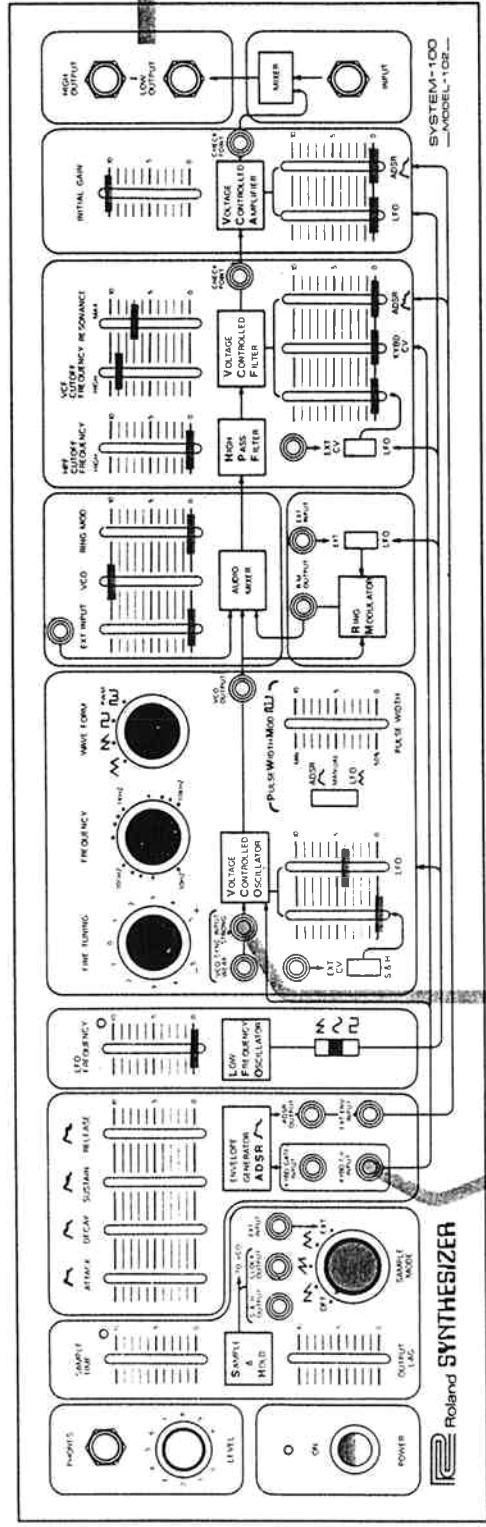
Strike a key and hold it until the action stops.  
(音色効果が終るまでキーを押し続けてください。)



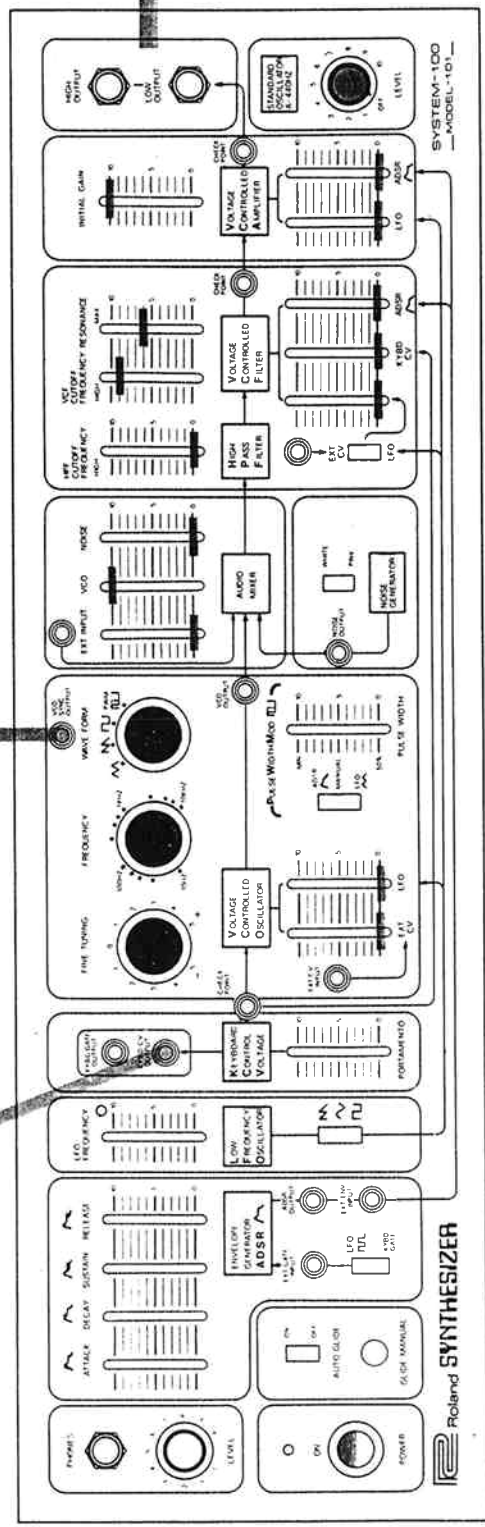
# PATCH 30

## VIDEO PATCH

(ビデオ用パッチ)



1 102



1 101

This patch produces interesting visual patterns on an oscilloscope. Experiment with the VCO controls. (オシロスコープの画面で面白い映像を映し出すことのできるパッチです。VCOをさまざまにコントロールしてみてください。)

## THE LAST WORD.....

In your experimenting, if you find some wild sound you'd like to share with us, please send it along; we'd be very glad to receive it. Or, if you have any special problems in making patches, please let us know and we'll try to help you out.

### Synthesizer Project Manager

Roland Corporation  
3-2-26, Shinkitajima  
Suminoe-ku  
Osaka, JAPAN

Copyright © 1976 by ROLAND CORPORATION

All rights reserved. No part of this publication may be reproduced in any form without prior written permission from ROLAND CORPORATION

Copyright © 1976 by ROLAND CORPORATION  
無断の複製・転載を禁じます。



Roland

ROLAND CORPORATION

10000 W. Sunset Blvd., Suite 1000, Beverly Hills, CA 90231, USA  
Tel: (310) 275-2000 Fax: (310) 275-2001  
www.roland.com